

SRS - Tulejki izolacyjne



Fig. 1

Top Hole: Snap-lock: \varnothing 4.7
Panel Thickness: 1.57

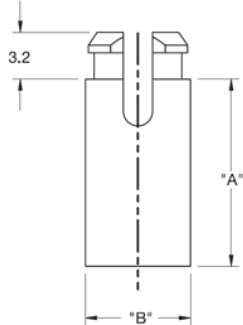


Fig. 2

Top Hole: Snap-lock: \varnothing 5.9
Panel Thickness: 1.57

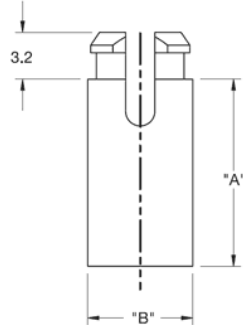
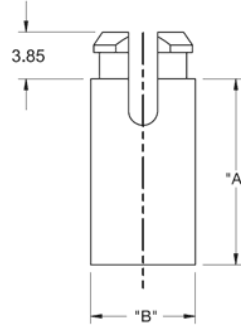


Fig. 3

Top Hole: Snap-lock: \varnothing 5.9
Panel Thickness: 2.2



Dane techniczne:

- **Materiał:** Nylon 6/6, UL94 V-2, RMS-01 lub Nylon 6/6, UL94 V-0, RMS-19
- **Kolor:** naturalny - NAT
- Minimum zakupu: 1000 szt.

Symbol	Gwint	Długość A	Średnica B	C	Średnica otworu montażowego	Grubość panelu	Rys.	Klasa palności
		[mm]	[mm]		[mm]	[mm]		
SRS4-2-01	M3	3.2	6.4	3.2	4.7	1.57	1	UL94 V-2
SRS4-3-01	M3	4.8	6.4	3.2	4.7	1.57	1	UL94 V-2
SRS4-4-01	M3	6.4	6.4	3.2	4.7	1.57	1	UL94 V-2
SRS4-5-01	M3	7.9	6.4	3.2	4.7	1.57	1	UL94 V-2
SRS4-6-01	M3	9.5	6.4	3.2	4.7	1.57	1	UL94 V-2
SRS4-7-01	M3	11.1	6.4	3.2	4.7	1.57	1	UL94 V-2
SRS4-8-01	M3	12.7	6.4	3.2	4.7	1.57	1	UL94 V-2
SRS4-10-01	M3	15.9	6.4	3.2	4.7	1.57	1	UL94 V-2
SRS4-12-01	M3	19.1	6.4	3.2	4.7	1.57	1	UL94 V-2
SRS4-14-01	M3	22.2	6.4	3.2	4.7	1.57	1	UL94 V-2
SRS4-16-01	M3	25.4	6.4	3.2	4.7	1.57	1	UL94 V-2
SRS4-2-19	M3	3.2	6.4	3.2	4.7	1.57	1	UL94 V-0
SRS4-3-19	M3	4.8	6.4	3.2	4.7	1.57	1	UL94 V-0
SRS4-4-19	M3	6.4	6.4	3.2	4.7	1.57	1	UL94 V-0

Symbol	Gwint	Długość A	Średnica B	C	Średnica otworu montażowego	Grubość panelu	Rys.	Klasa palności
		[mm]	[mm]	[mm]	[mm]	[mm]		
SRS4-5-19	M3	7.9	6.4	3.2	4.7	1.57	1	UL94 V-0
SRS4-6-19	M3	9.5	6.4	3.2	4.7	1.57	1	UL94 V-0
SRS4-7-19	M3	11.1	6.4	3.2	4.7	1.57	1	UL94 V-0
SRS4-8-19	M3	12.7	6.4	3.2	4.7	1.57	1	UL94 V-0
SRS4-10-19	M3	15.9	6.4	3.2	4.7	1.57	1	UL94 V-0
SRS4-12-19	M3	19.1	6.4	3.2	4.7	1.57	1	UL94 V-0
SRS4-14-19	M3	22.2	6.4	3.2	4.7	1.57	1	UL94 V-0
SRS4-16-19	M3	25.4	6.4	3.2	4.7	1.57	1	UL94 V-0
SRS6-4-01	M3.5	6.4	7.1	3.9	5.9	1.57	2	UL94 V-2
SRS6-5-01	M3.5	7.9	7.1	3.9	5.9	1.57	2	UL94 V-2
SRS6-6-01	M3.5	9.5	7.1	3.9	5.9	1.57	2	UL94 V-2
SRS6-7-01	M3.5	11.1	7.1	3.9	5.9	1.57	2	UL94 V-2
SRS6-8-01	M3.5	12.7	7.1	3.9	5.9	1.57	2	UL94 V-2
SRS6-10-01	M3.5	15.9	7.1	3.9	5.9	1.57	2	UL94 V-2
SRS6-12-01	M3.5	19.1	7.1	3.9	5.9	1.57	2	UL94 V-2
SRS6-14-01	M3.5	22.2	7.1	3.9	5.9	1.57	2	UL94 V-2
SRS6-16-01	M3.5	25.4	7.1	3.9	5.9	1.57	2	UL94 V-2
SRS6-4-19	M3.5	6.4	7.1	3.9	5.9	1.57	2	UL94 V-0
SRS6-5-19	M3.5	7.9	7.1	3.9	5.9	1.57	2	UL94 V-0
SRS6-6-19	M3.5	9.5	7.1	3.9	5.9	1.57	2	UL94 V-0
SRS6-7-19	M3.5	11.1	7.1	3.9	5.9	1.57	2	UL94 V-0
SRS6-8-19	M3.5	12.7	7.1	3.9	5.9	1.57	2	UL94 V-0
SRS6-10-19	M3.5	15.9	7.1	3.9	5.9	1.57	2	UL94 V-0
SRS6-12-19	M3.5	19.1	7.1	3.9	5.9	1.57	2	UL94 V-0
SRS6-14-19	M3.5	22.2	7.1	3.9	5.9	1.57	2	UL94 V-0
SRS6-16-19	M3.5	25.4	7.1	3.9	5.9	1.57	2	UL94 V-0
SRS8-2-01	M4	3.2	7.1	4.3	5.9	1.57	2	UL94 V-2
SRS8-3-01	M4	4.8	7.1	4.3	5.9	1.57	2	UL94 V-2
SRS8-4-01	M4	6.4	7.1	4.3	5.9	1.57	2	UL94 V-2
SRS8-5-01	M4	7.9	7.1	4.3	5.9	1.57	2	UL94 V-2
SRS8-6-01	M4	9.5	7.1	4.3	5.9	1.57	2	UL94 V-2
SRS8-7-01	M4	11.1	7.1	4.3	5.9	1.57	2	UL94 V-2
SRS8-8-01	M4	12.7	7.1	4.3	5.9	1.57	2	UL94 V-2
SRS8-10-01	M4	15.9	7.1	4.3	5.9	1.57	2	UL94 V-2
SRS8-12-01	M4	19.1	7.1	4.3	5.9	1.57	2	UL94 V-2
SRS8-14-01	M4	22.2	7.1	4.3	5.9	1.57	2	UL94 V-2
SRS8-16-01	M4	25.4	7.1	4.3	5.9	1.57	2	UL94 V-2
SRS8-2-19	M4	3.2	7.1	4.3	5.9	1.57	2	UL94 V-0
SRS8-3-19	M4	4.8	7.1	4.3	5.9	1.57	2	UL94 V-0
SRS8-4-19	M4	6.4	7.1	4.3	5.9	1.57	2	UL94 V-0
SRS8-5-19	M4	7.9	7.1	4.3	5.9	1.57	2	UL94 V-0
SRS8-6-19	M4	9.5	7.1	4.3	5.9	1.57	2	UL94 V-0
SRS8-7-19	M4	11.1	7.1	4.3	5.9	1.57	2	UL94 V-0
SRS8-8-19	M4	12.7	7.1	4.3	5.9	1.57	2	UL94 V-0
SRS8-10-19	M4	15.9	7.1	4.3	5.9	1.57	2	UL94 V-0
SRS8-12-19	M4	19.1	7.1	4.3	5.9	1.57	2	UL94 V-0
SRS8-14-19	M4	22.2	7.1	4.3	5.9	1.57	2	UL94 V-0
SRS8-16-19	M4	25.4	7.1	4.3	5.9	1.57	2	UL94 V-0
SRS8-2-3-01	M4	4.8	7.1	4.3	5.9	2.2	3	UL94 V-2
SRS8-2-4-01	M4	6.4	7.1	4.3	5.9	2.2	3	UL94 V-2
SRS8-2-5-01	M4	7.9	7.1	4.3	5.9	2.2	3	UL94 V-2
SRS8-2-6-01	M4	9.5	7.1	4.3	5.9	2.2	3	UL94 V-2
SRS8-2-7-01	M4	11.1	7.1	4.3	5.9	2.2	3	UL94 V-2
SRS8-2-8-01	M4	12.7	7.1	4.3	5.9	2.2	3	UL94 V-2

Symbol	Gwint	Długość A	Średnica B	C	Średnica otworu montażowego	Grubość panelu	Rys.	Klasa palności
		[mm]	[mm]	[mm]	[mm]	[mm]		
SRS8-2-10-01	M4	15.9	7.1	4.3	5.9	2.2	3	UL94 V-2
SRS8-2-12-01	M4	19.1	7.1	4.3	5.9	2.2	3	UL94 V-2
SRS8-2-14-01	M4	22.2	7.1	4.3	5.9	2.2	3	UL94 V-2
SRS8-2-16-01	M4	25.4	7.1	4.3	5.9	2.2	3	UL94 V-2
SRS8-2-2-19	M4	3.2	7.1	4.3	5.9	2.2	3	UL94 V-0
SRS8-2-3-19	M4	4.8	7.1	4.3	5.9	2.2	3	UL94 V-0
SRS8-2-4-19	M4	6.4	7.1	4.3	5.9	2.2	3	UL94 V-0
SRS8-2-5-19	M4	7.9	7.1	4.3	5.9	2.2	3	UL94 V-0
SRS8-2-6-19	M4	9.5	7.1	4.3	5.9	2.2	3	UL94 V-0
SRS8-2-7-19	M4	11.1	7.1	4.3	5.9	2.2	3	UL94 V-0
SRS8-2-8-19	M4	12.7	7.1	4.3	5.9	2.2	3	UL94 V-0
SRS8-2-10-19	M4	15.9	7.1	4.3	5.9	2.2	3	UL94 V-0
SRS8-2-12-19	M4	19.1	7.1	4.3	5.9	2.2	3	UL94 V-0
SRS8-2-14-19	M4	22.2	7.1	4.3	5.9	2.2	3	UL94 V-0
SRS8-2-16-19	M4	25.4	7.1	4.3	5.9	2.2	3	UL94 V-0