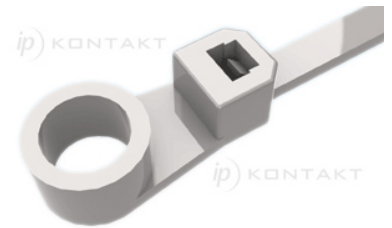
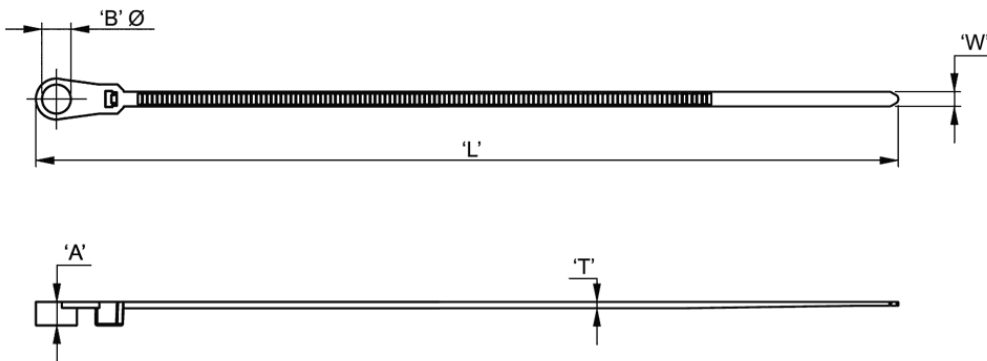


RG-SCREW - Opaska kablowa przykręcana



Dane techniczne:

- **Materiał:** UL94 V-2 Nylon 6/6, RMS-01*
- **Kolor:** Naturalny
- **Minimum zakupu:** 100 szt.

| Symbol | Szerokość W | Długość L | Grubość T | Maks. średn. wiązki kablowej | A | ØB | Materiał | Klasa palności | Kolor |
|-----------|----------------|--------------|--------------|---------------------------------|------|------|----------|----------------|-----------|
| | [mm] | [mm] | [mm] | [mm] | [mm] | [mm] | | | |
| RG-2150-I | 3.6 | 150 | 1.1 | 34 | 4.5 | 4.5 | PA 66 | UL94 V-2 | naturalny |
| RG-2200-S | 4.8 | 206 | 1.4 | 50 | 5.2 | 5.5 | PA 66 | UL94 V-2 | naturalny |
| RG-2200-H | 7.5 | 220 | 1.9 | 44 | 6.5 | 5.9 | PA 66 | UL94 V-2 | naturalny |
| RG-2300-H | 7.5 | 330 | 1.9 | 75 | 6.5 | 5.9 | PA 66 | UL94 V-2 | naturalny |
| RG-2380-H | 7.5 | 383 | 1.9 | 101 | 6.5 | 5.9 | PA 66 | UL94 V-2 | naturalny |