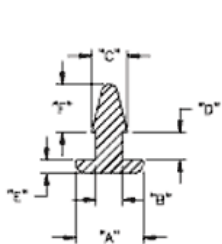
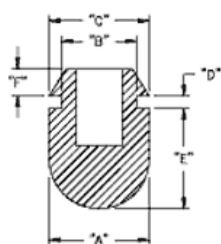


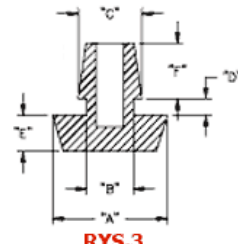
POF - Gumowa nóżka wciskana w otwór



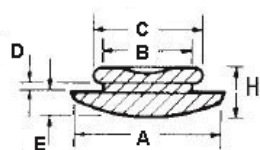
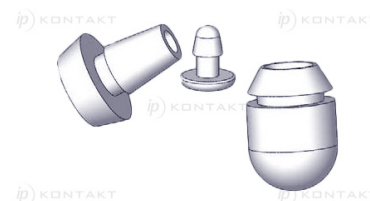
RYS.1



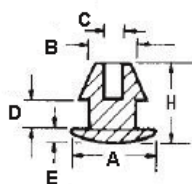
RYS.2



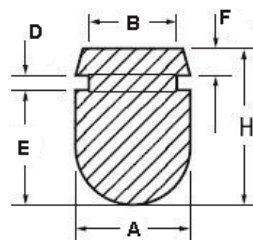
RYS.3



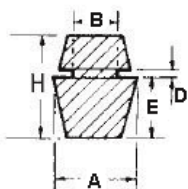
RYS.4



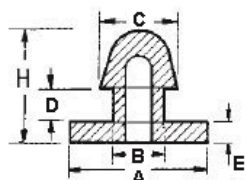
RYS.5



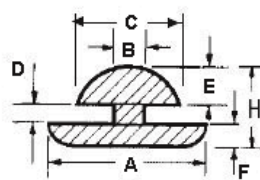
RYS.6



RYS.7



RYS.8



RYS.9

Dane techniczne:

- **Materiał: TPE lub PVC**
- Idealne jako nogi korpusów i obudów
- Łatwy i szybki montaż
- Kolor: czarny
- Minimum zakupu: 1 opakowanie

Symbol	ØA	ØB	ØC	D	E	F	H	Rys.	Materiał	Klasa palności	Kolor	Opakowanie
	[mm]	[mm]	[mm]	[mm]	[mm]	[mm]	[mm]					[szt./pcs]
POF-40022	7.9	3.2	4.3	3.3	1.5	4.1	-	1	TPE	UL94 HB	czarny	100
POF-40048	7.9	3.7	5.8	1.5	2.3	3.6	-	1	TPE	UL94 HB	czarny	100
POF-40059	12.7	9.5	12.2	1.5	12.7	3.6	-	2	TPE	UL94 HB	czarny	100
POF-50185	13.7	6.3	7.6	2	4.6	8.9	-	3	TPE	UL94 HB	czarny	100
POF-12664	15.7	7	8.6	1.3	5.1	4.1	-	3	TPE	UL94 HB	czarny	100
O-POF-190-131	19	13.1	12	0.8	3.2	-	6.5	4	PVC	-	czarny	10000
O-POF-154-980	15.4	9.8	12.7	1.6	2.7	-	7	4	PVC	-	czarny	10000
O-POF-190-128	19	12.8	15.9	1.6	3.2	-	7.5	4	PVC	-	czarny	3500
O-POF-103-450	10.3	4.5	2.2	1.6	2	-	7.6	5	PVC	-	czarny	5000
O-POF-158-680	15.8	6.8	4	1.5	5	-	9.7	5	PVC	-	czarny	10000
O-POF-125-950	12.5	9.5	-	1.6	12	3.5	17	6	PVC	-	czarny	5000
O-POF-109-690	10.9	6.9	-	0.7	8.1	-	12.8	7	PVC	-	czarny	10000
O-POF-253-125	25.3	12.5	15.3	5	4	-	20	8	PVC	-	czarny	2000
O-POF-175-111	17.5	11.1	13.3	2.6	4	4	10	9	PVC	-	czarny	10000