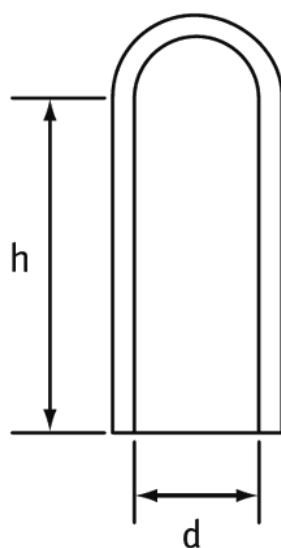


O-NM - Nasadka maskująca



Dane techniczne:

- **Materiał: Czarny EPDM**
- **Stosowana do maskowania trzpieni, sworzni, gwintów i rur**
- **Może być również użyta do maskowania otworów gwintowanych i niegwintowanych.**
- **Opakowania: 1000 szt. Inne ilości dostępne na zamówienie.**

Symbol	Gwint metryczny	Gwint UNF	Gwint BSP	Średnica wewn. d	Wysokość h
			[in]	[mm]	[mm]
O-NM-5127	-	-	-	0.5	12.7
O-NM-16191	-	1/16"	-	1.6	19.1
O-NM-18254	-	1/16"	-	1.8	25.4
O-NM-24191	-	-	-	2.4	19.1
O-NM-24254	-	-	-	2.4	25.4
O-NM-25127	-	-	-	2.5	12.7
O-NM-25254	-	-	-	2.5	25.4
O-NM-28191	M3	-	-	2.8	19.1
O-NM-28254	M3	-	-	2.8	25.4
O-NM-32127	-	-	-	3.2	12.7
O-NM-32254	-	-	-	3.2	25.4
O-NM-35127	-	-	-	3.5	12.7
O-NM-35254	-	-	-	3.5	25.4
O-NM-38191	M4	-	-	3.8	19.1
O-NM-38254	M4	-	-	3.8	25.4
O-NM-40127	M4	-	-	4	12.7
O-NM-40254	M4	-	-	4	25.4
O-NM-40381	M4	-	-	4	38.1
O-NM-44127	-	3/16"	-	4.4	12.7
O-NM-44254	-	3/16"	-	4.4	25.4
O-NM-44381	-	3/16"	-	4.4	38.1
O-NM-48127	M5	-	-	4.8	12.7
O-NM-48254	M5	-	-	4.8	25.4
O-NM-55254	-	-	-	5.5	25.4
O-NM-57127	M6	-	-	5.7	12.7

Symbol	Gwint metryczny	Gwint UNF	Gwint BSP	Średnica wewn. d	Wysokość h
			[in]	[mm]	[mm]
O-NM-57254	M6	-	-	5.7	25.4
O-NM-57381	M6	-	-	5.7	38.1
O-NM-59127	M6	1/4"	-	5.9	12.7
O-NM-59254	M6	1/4"	-	5.9	25.4
O-NM-59381	M6	1/4"	-	5.9	38.1
O-NM-64254	-	-	-	6.4	25.4
O-NM-64381	-	-	-	6.4	38.1
O-NM-71127	-	5/16"	-	7.1	12.7
O-NM-71254	-	5/16"	-	7.1	25.4
O-NM-75381	M8	5/16"	1/16"	7.5	38.1
O-NM-79254	M8	-	-	7.9	25.4
O-NM-79381	M8	-	-	7.9	38.1
O-NM-87254	-	-	-	8.7	25.4
O-NM-90381	-	-	-	9	38.1
O-NM-95127	M10	-	1/8"	9.5	12.7
O-NM-95191	M10	-	1/8"	9.5	19.1
O-NM-95254	M10	-	1/8"	9.5	25.4
O-NM-95381	M10	-	1/8"	9.5	38.1
O-NM-103254	-	-	-	10.3	25.4
O-NM-111254	-	7/16"	-	11.1	25.4
O-NM-116254	-	-	-	11.6	25.4
O-NM-116381	M12	-	-	11.6	38.1
O-NM-119254	M12	1/2"	-	11.9	25.4
O-NM-122381	-	1/2"	-	12.2	38.1
O-NM-127381	-	1/2"	1/4"	12.7	38.1
O-NM-127762	-	1/2"	1/4"	12.7	76.2
O-NM-1271016	-	1/2"	1/4"	12.7	101.6
O-NM-136381	M14	-	-	13.6	38.1
O-NM-136762	M14	-	-	13.6	76.2
O-NM-143167	M15	-	-	14.3	16.7
O-NM-143381	M15	-	-	14.3	38.1
O-NM-152381	-	-	-	15.2	38.1
O-NM-159318	M16	5/8"	3/8"	15.9	31.8
O-NM-159381	M16	5/8"	3/8"	15.9	38.1
O-NM-159572	M16	5/8"	3/8"	15.9	57.2
O-NM-175159	-	-	-	17.5	15.9
O-NM-175381	-	-	-	17.5	38.1
O-NM-175445	-	-	-	17.5	44.5
O-NM-175635	-	-	-	17.5	63.5
O-NM-185381	-	-	-	18.5	38.1
O-NM-1851099	-	-	-	18.5	109.9
O-NM-191381	M20	3/4"	-	19.1	38.1
O-NM-191489	M20	3/4"	-	19.1	48.9
O-NM-191889	M20	3/4"	-	19.1	88.9
O-NM-1911092	M20	3/4"	-	19.1	109.2
O-NM-206254	M22	7/8"	1/2"	20.6	25.4
O-NM-206381	M22	7/8"	1/2"	20.6	38.1
O-NM-215722	M22	7/8"	-	21.5	72.2
O-NM-222381	-	-	-	22.2	38.1
O-NM-238381	M24	-	-	23.8	38.1
O-NM-246381	-	-	-	24.6	38.1
O-NM-2461016	-	-	-	24.6	101.6
O-NM-254208	M27	1"	-	25.4	20.8
O-NM-254381	M27	1"	-	25.4	38.1

Symbol	Gwint metryczny	Gwint UNF	Gwint BSP	Średnica wewn. d	Wysokość h
			[in]	[mm]	[mm]
O-NM-254508	M27	1"	-	25.4	50.8
O-NM-275762	-	-	-	27.5	76.2
O-NM-286381	M30	-	-	28.6	38.1
O-NM-301590	-	-	-	30.1	59
O-NM-318381	M33	1 1/4"	1"	31.8	38.1
O-NM-381254	M39	1 1/2"	-	38.1	25.4
O-NM-381381	M39	1 1/2"	-	38.1	38.1
O-NM-381445	M39	1 1/2"	-	38.1	44.5
O-NM-413508	-	-	1 1/4"	41.3	50.8
O-NM-445381	-	1 3/4"	-	44.5	38.1
O-NM-445508	-	1 3/4"	-	44.5	50.8
O-NM-476508	-	-	1 1/2"	47.6	50.8
O-NM-508508	-	-	-	50.8	50.8
O-NM-535508	-	-	-	53.5	50.8