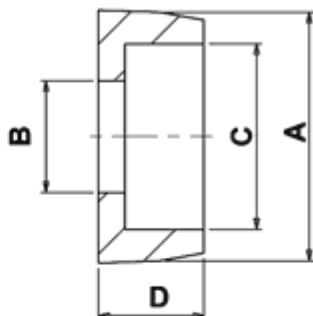
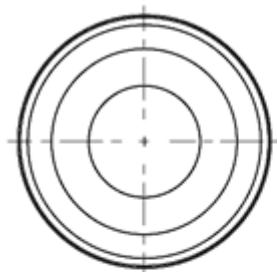
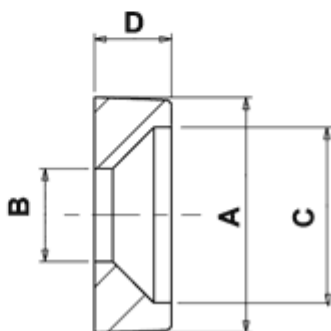
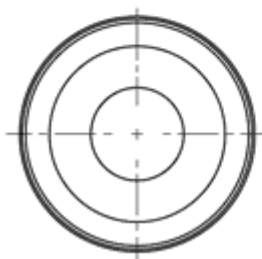


## FP-2882 - Podkładki pod śruby

**TYP 1**



**TYP 2**



Dane techniczne:

- **Materiał: PA 6.6**
- **Klasa palności: UL94V2**
- **Kolor: czarny**
- Temperatura pracy: -35°C do +85°C

Symbol	Typ	Średnica zewn. A	Średnica wewn. B	C	Wysokość D	Materiał	Klasa palności	Kolor
		[mm]	[mm]	[mm]	[mm]			
2882AA01	1	7.8	3.2	5.6	3	PA 66	UL94 V-2	czarny
2883AA01	1	9.8	4.2	7.2	3	PA 66	UL94 V-2	czarny
2884AA01	1	11.8	5.3	8.8	5	PA 66	UL94 V-2	czarny
2885AA01	1	13.9	6.3	10.5	6	PA 66	UL94 V-2	czarny
2890AA01	1	13.8	6.5	12.6	2.6	PA 66	UL94 V-2	czarny
2886AA01	1	17.9	8.4	13.5	8	PA 66	UL94 V-2	czarny
2887AA01	1	21.9	10.5	16.5	10	PA 66	UL94 V-2	czarny
2897AA01	2	8	3	6	2.6	PA 66	UL94 V-2	czarny
2898AA01	2	10.7	4	8	3.5	PA 66	UL94 V-2	czarny
2899AA01	2	13.4	5	10	4.4	PA 66	UL94 V-2	czarny
2900AA01	2	16	6	12	5.2	PA 66	UL94 V-2	czarny
2901AA01	2	21.4	8	16	7	PA 66	UL94 V-2	czarny
2902AA01	2	26.8	10	20	8.8	PA 66	UL94 V-2	czarny