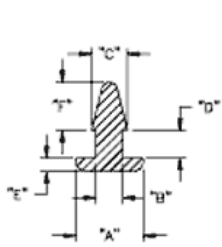
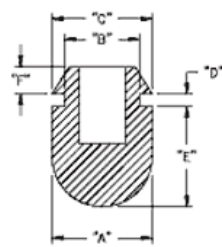


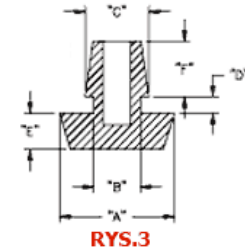
POF - Gumowa nóżka wciskana w otwór



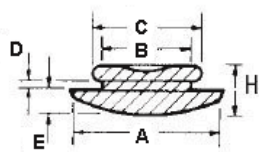
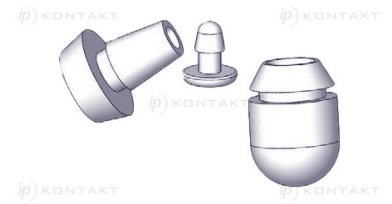
RYS.1



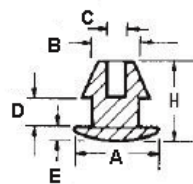
RYS.2



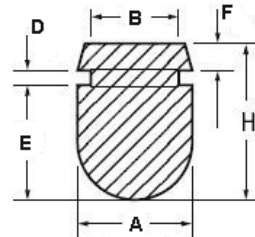
RYS.3



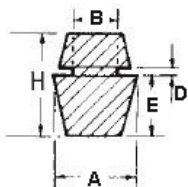
RYS.4



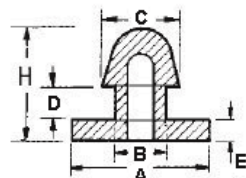
RYS.5



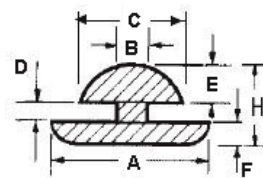
RYS.6



RYS.7



RYS.8



RYS.9

Dane techniczne:

- **Materiał: TPE lub PVC**
- Idealne jako nogi korpusów i obudów
- Łatwy i szybki montaż
- Kolor: czarny
- Minimum zakupu: 1 opakowanie

Symbol	ØA	ØB	ØC	D	E	F	H	Rys.	Materiał	Klasa palności	Kolor	Opakowanie
	[mm]	[mm]	[mm]	[mm]	[mm]	[mm]	[mm]					[szt./pcs]
POF-40048	7.9	3.7	5.8	1.5	2.3	3.6	-	1	TPE	UL94 HB	czarny	100