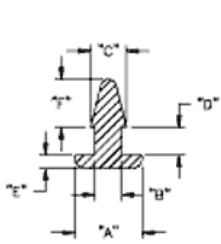
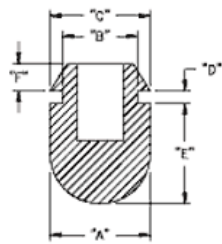


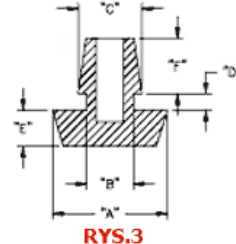
**POF - Gumowa nóżka wciskana w otwór**



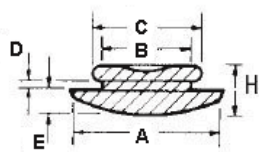
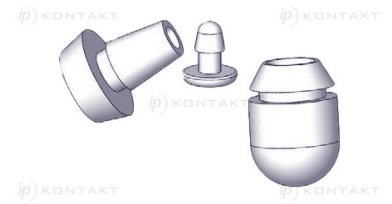
**RYS.1**



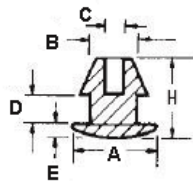
**RYS.2**



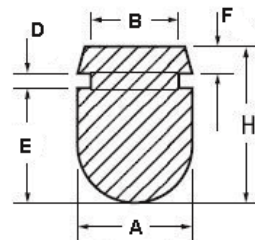
**RYS.3**



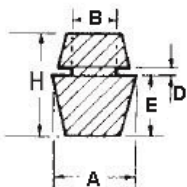
**RYS.4**



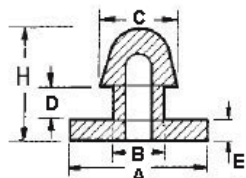
**RYS.5**



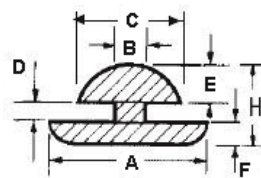
**RYS.6**



**RYS.7**



**RYS.8**



**RYS.9**

**Dane techniczne:**

- **Materiał: TPE lub PVC**
- Idealne jako nogi korpusów i obudów
- Łatwy i szybki montaż
- Kolor: czarny
- Minimum zakupu: 1 opakowanie

Symbol	ØA	ØB	ØC	D	E	F	H	Rys.	Materiał	Klasa palności	Kolor	Opakowanie
	[mm]	[mm]	[mm]	[mm]	[mm]	[mm]	[mm]					[szt./pcs]
O-POF-190-131	19	13.1	12	0.8	3.2	-	6.5	4	PVC	-	czarny	10000