

SRS - Self-Retaining Spacer



Fig. 1

Top Hole: Snap-lock: Ø 4.7
Panel Thickness: 1.57

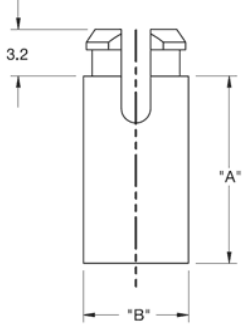


Fig. 2

Top Hole: Snap-lock: Ø 5.9
Panel Thickness: 1.57

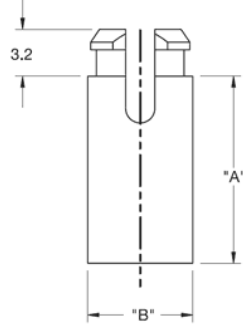
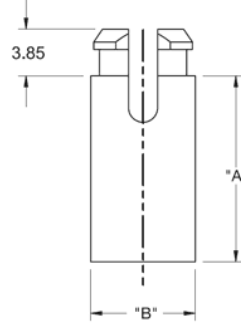


Fig. 3

Top Hole: Snap-lock: Ø 5.9
Panel Thickness: 2.2



Details:

- **Material: Nylon 6/6, UL94 V-2, RMS-01 or Nylon 6/6, UL94 V-0, RMS-19**
- **Color: natural**
- **Standard pack: 1000 pcs**

Symbol	Thread	Length A	Diameter B	C	Mounting hole diameter	Panel thickness	Rys.	Flammability
		[mm]	[mm]		[mm]	[mm]		
SRS6-10-01	M3.5	15.9	7.1	3.9	5.9	1.57	2	UL94 V-2