

## SRS - Self-Retaining Spacer



Fig. 1

**Top Hole: Snap-lock: Ø 4.7**  
**Panel Thickness: 1.57**

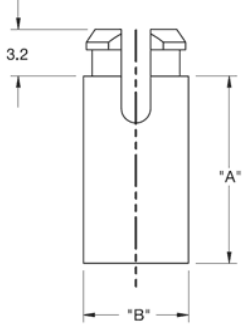


Fig. 2

**Top Hole: Snap-lock: Ø 5.9**  
**Panel Thickness: 1.57**

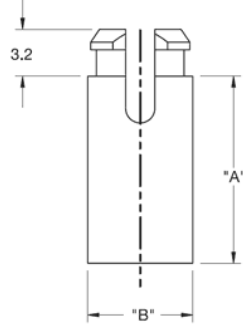
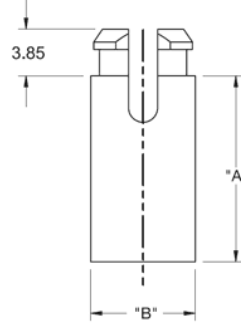


Fig. 3

**Top Hole: Snap-lock: Ø 5.9**  
**Panel Thickness: 2.2**



**Details:**

- **Material: Nylon 6/6, UL94 V-2, RMS-01 or Nylon 6/6, UL94 V-0, RMS-19**
- **Color: natural**
- **Standard pack: 1000 pcs**

Symbol	Thread	Length A	Diameter B	C	Mounting hole diameter	Panel thickness	Rys.	Flammability
		[mm]	[mm]	[mm]	[mm]	[mm]		
SRS4-6-19	M3	9.5	6.4	3.2	4.7	1.57	1	UL94 V-0