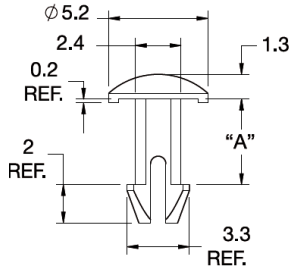
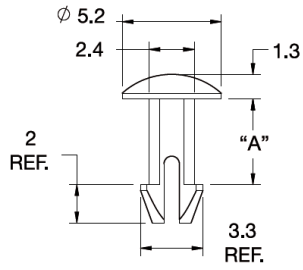


## SLP - Snap Lock Pin

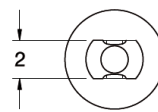
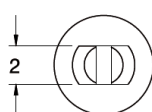
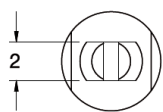
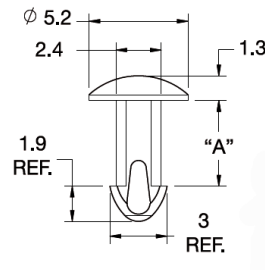
**Rys. 1**



**Rys. 2**



**Rys. 3**



**Details:**

- **Material: Nylon 6/6, UL 94 V-2, RMS-01\***
- **Material: Nylon 6/6, UL 94 V-0, RMS-19\***
- **Color: natural**
- **Standard pack: 1000 pcs**

Symbol	Fig.	Mounting hole diameter ±0.05	Panel thickness A	Head height	Material	Flammability	Color
		[mm]	[mm]	[mm]			
SLP-2-100-413-01	3	2.5	10.5	1.3	PA 66	UL94 V-2	natural