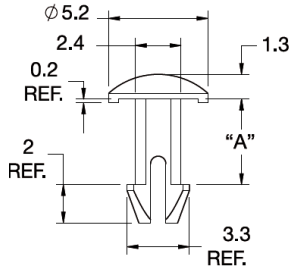
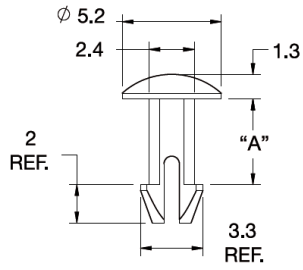


SLP - Snap Lock Pin

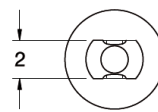
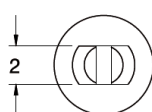
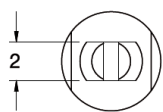
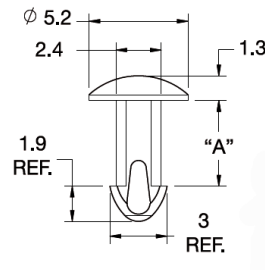
Rys. 1



Rys. 2



Rys. 3



Details:

- **Material: Nylon 6/6, UL 94 V-2, RMS-01***
- **Material: Nylon 6/6, UL 94 V-0, RMS-19***
- **Color: natural**
- **Standard pack: 1000 pcs**

Symbol	Fig.	Mounting hole diameter ±0.05	Panel thickness A	Head height	Material	Flammability	Color
		[mm]	[mm]	[mm]			
SLP-2-100-330-01	3	2.5	8.4	1.3	PA 66	UL94 V-2	natural