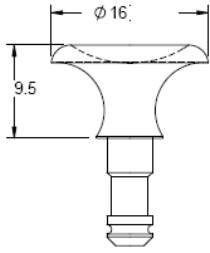
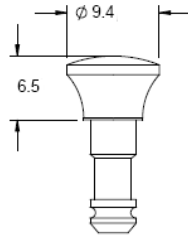


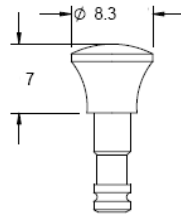
### SLG / SLPL / SLPB - Snap Latch



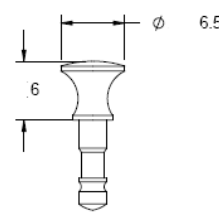
SLPL-1L ~ SLPL-4L



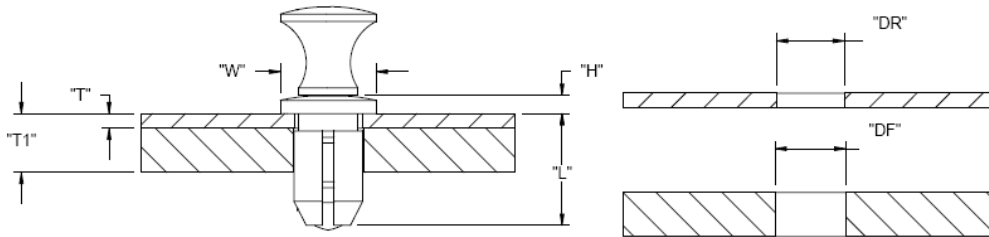
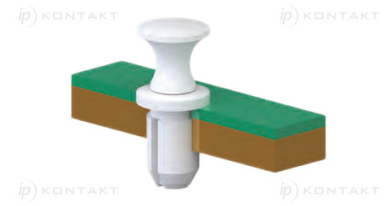
SLPB-1L ~ SLPB-4L



SLPB-1M ~ SLPB-4M



SLPB-1S ~ SLPB-2S



**Details:**

- **Material: Plunger; UL94V2 Nylon 6, RMS-120\***
- **Grommet; UL94 V2 Polycarbonate, RMS-72\***
- **Colour: black (BLK), white (WH)**
- To install, push the grommet into the removable panel and then the desired plunger into the grommet. When the panel and plunger are pushed into the fixed panel, it locks them together
- Simply pull on the plunger to remove the non-fixed panel
- Grommet and mating plunger are sold separately
- Standard Pack: 1000/Bag

Symbol	Head diameter W	Head height H	L	Panel thickness T	Panel thickness range T1	Mounting hole diameter range DR	Mounting hole diameter range DF	Plug	Material	Flammability	Color
	[mm]	[mm]	[mm]	[mm]	[mm]	[mm]	[mm]				
SLG-2M-W	8.5	1.8	8.5	1.6	2 - 4.2	5.95 - 6.1	6.35 - 6.5	SLPB-2M-W or SLPL-2L-W	PC + PA 6	UL94 V-2	white