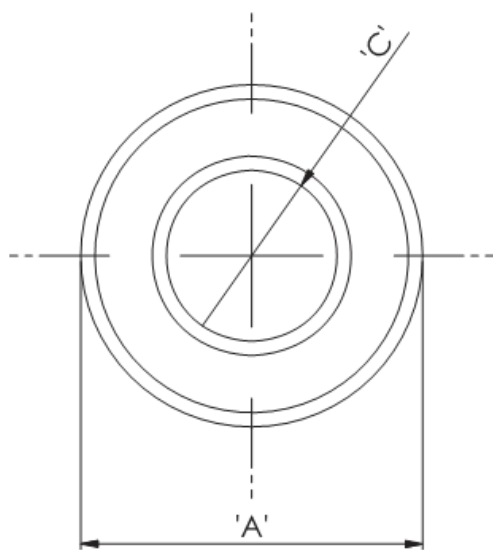


RT - Toroid Cores



Details:

- **Ferrite Material: K5B RMS-303***
- RT type ring cores are mainly used for coupling transformers, balancing coils, fixed coils and filter coils
- The RT type ferrite cores can be used for a wide range of cable diameters from 0.8 mm to 36 mm (see dimension C in table for reference)
- Mainly used as a multi-turn suppression core
- Custom sizes are available by special order
- Impedance figures are typical values and based on single turn measurements
- Standard Pack sizes may vary

Symbol	A	B	C	Impedance @25MHz	Impedance @100MHz	Standard pack
	[mm]	[mm]	[mm]	[Ω]	[Ω]	[szt./pcs]
RT-35-8-30-K5B	3.5	3	0.8	31	53	4000