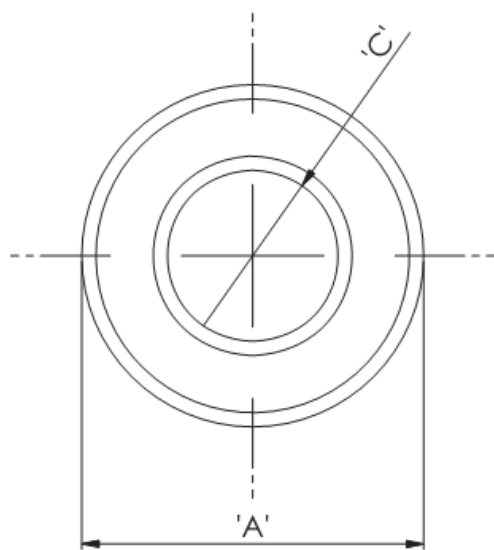


RT - Toroid Cores



Details:

- **Ferrite Material: K5B RMS-303***
- RT type ring cores are mainly used for coupling transformers, balancing coils, fixed coils and filter coils
- The RT type ferrite cores can be used for a wide range of cable diameters from 0.8 mm to 36 mm (see dimension C in table for reference)
- Mainly used as a multi-turn suppression core
- Custom sizes are available by special order
- Impedance figures are typical values and based on single turn measurements
- Standard Pack sizes may vary

| Symbol | A | B | C | Impedance @25MHz | Impedance @100MHz | Standard pack |
|-------------------|------|------|------|------------------|-------------------|---------------|
| | [mm] | [mm] | [mm] | [Ω] | [Ω] | [szt./pcs] |
| RT-142-64-135-K5B | 14.2 | 13.5 | 6.35 | 75 | 125 | 200 |