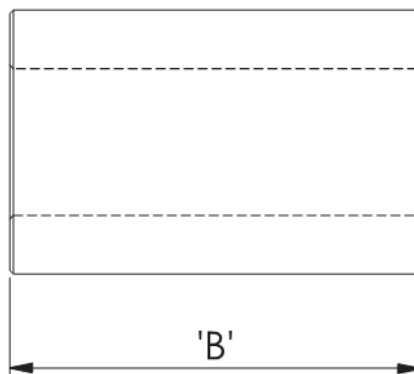
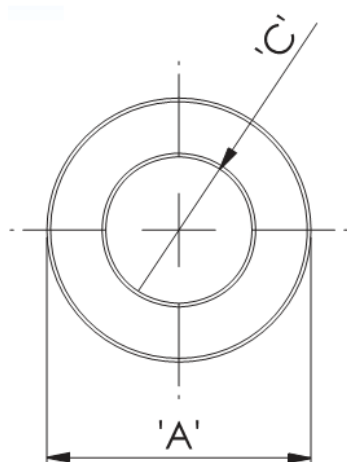


## RRH - Sleeve Cores



### Details:

- Ferrite material: K5B RMS-303\*
- RRH type bead cores are mainly produced for cable wire assemblies and MATV, CATV harness makers
- Mainly used on internal and external computer data and power cables
- Available to suit a wide range of cable diameters from 0.80 mm to 13.77 mm (see dimension C in table for reference)
- Custom sizes are available by special order
- Impedance figures are typical values and based on single turn measurements
- Standard Pack sizes may vary

| Symbol          | A    | B    | C    | Impedance @25MHz | Impedance @100MHz | Standard pack |
|-----------------|------|------|------|------------------|-------------------|---------------|
|                 | [mm] | [mm] | [mm] | [Ω]              | [Ω]               | [szt./pcs]    |
| RRH-35-8-47-K5B | 3.5  | 4.7  | 0.8  | 46               | 77                | 4000          |