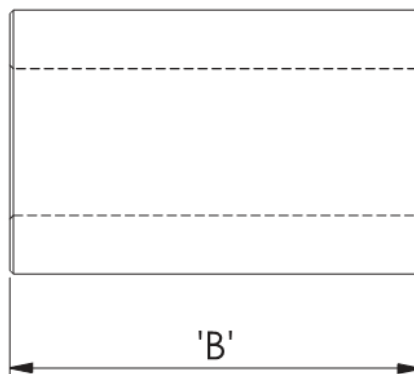
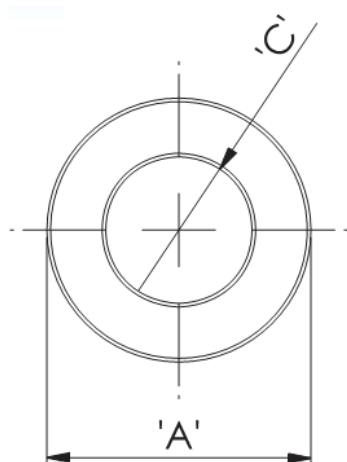


## RRH - Sleeve Cores



### Details:

- Ferrite material: K5B RMS-303\*
- RRH type bead cores are mainly produced for cable wire assemblies and MATV, CATV harness makers
- Mainly used on internal and external computer data and power cables
- Available to suit a wide range of cable diameters from 0.80 mm to 13.77 mm (see dimension C in table for reference)
- Custom sizes are available by special order
- Impedance figures are typical values and based on single turn measurements
- Standard Pack sizes may vary

Symbol	A	B	C	Impedance @25MHz	Impedance @100MHz	Standard pack
	[mm]	[mm]	[mm]	[Ω]	[Ω]	[szt./pcs]
RRH-35-12-70-K5B	3.5	7	1.2	54	84	2000