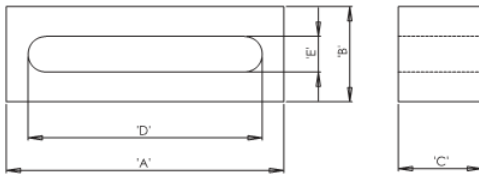
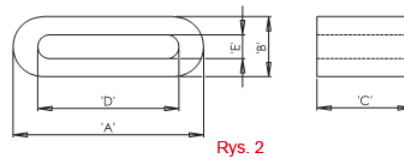


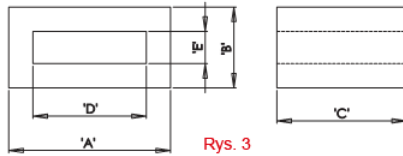
## RFS - Flat Cable Sleeve Cores



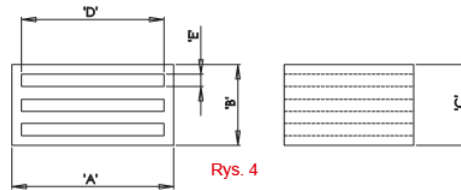
Rys. 1



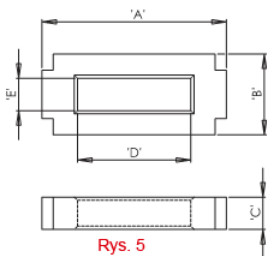
Rys. 2



Rys. 3



Rys. 4



Rys. 5

**Details:**

- Ferrite material: A5

Symbol	A	B	C	D	E	Impedance @25MHz	Impedance @100MHz	Rys. / Fig.	Standard pack
	[mm]	[mm]	[mm]	[mm]	[mm]	[Ω]	[Ω]		[szt./pcs]
RFS2-3-9-K5B*	6.5	3.8	9	4	1.4	41	72	2	500