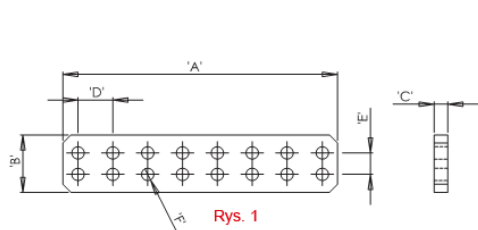
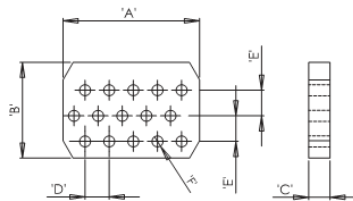


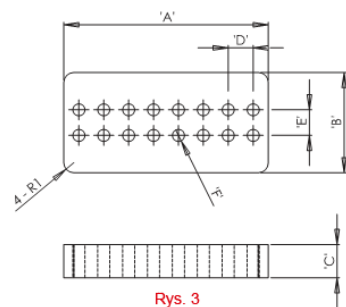
RFD - Multihole Plates for Connectors



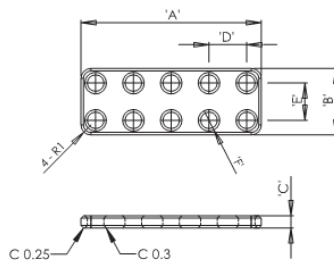
Rys. 1



Rys. 2



Rys. 3



Rys. 4

Details:

- **Ferrite Material: A5**
- MultiHole plates for connectors are special solutions used as EMI suppression devices (in connectors) to be assembled on a PCB
- There is a wide selection of multihole for "D" subconnectors as well as suppressor elements for DIL and transition elements
- Designs to fit 9, 15, 25 or 37 "D" subconnectors
- Transition connectors and integrated circuit products are also available.
- Available in a wide range of dimensions from 1.22 mm to 5.4 mm (see dimension C in table for reference)
- Custom sizes are available by special order
- Impedance figures are typical values and based on single turn measurements

Symbol	A	B	C	D	E	F	Impedance @25MHz	Impedance @100MHz	Rys. / Fig.	Standard pack
	[mm]	[mm]	[mm]	[mm]	[mm]	[mm]	[Ω]	[Ω]		[szt./pcs]
RFD-15T-135-95-21-A5	13.45	9.5	2.1	2.54	2.54	1.1	46	67	2	1610