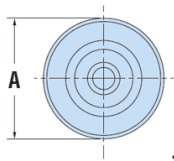
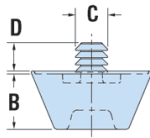


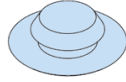
## H-RGB - Rubber Push-In Bumpers



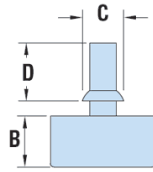
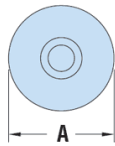
**Type H**



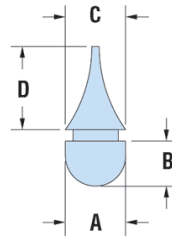
**Type D**



**Type T1**



**Type T2**



**Details:**

- **Material: TPV (Santoprene), SBR or EPDM**
- **Colour: black**
- Rubber bumpers are designed for through hole installation.
- Designed to fit snugly into your opening and not let air, water, etc. pass through
- Type T2 designed for pull through applications
- Standard pack: 1000 pcs

| Symbol  | Type | Mounting hole diameter | Panel thickness max. | Ext. diameter ØA | B    | ØC   | D    | Material | Color |
|---------|------|------------------------|----------------------|------------------|------|------|------|----------|-------|
|         |      | [mm]                   | [mm]                 | [mm]             | [mm] | [mm] | [mm] |          |       |
| H-G3116 | H    | 5.2                    | 2                    | 20.6             | 4.7  | 5.6  | 5.1  | TPV      | black |