

## H-RGB-2 - Rubber Push-In Bumpers



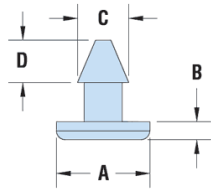
**Typ 1**



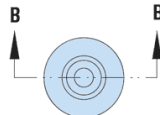
**Typ 2**



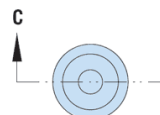
**Typ 3**



**Typ 4**



**Typ 5**



**Typ 6**

**Details:**

- **Material:** TPE, SBR or Nitrile
- **Colour:** black
- Rubber bumpers are designed for through hole installation.
- Designed to fit snugly into your opening and not let air, water, etc. pass through

Symbol	Type	Mounting hole diameter	Panel thickness max.	Ext. diameter ØA	B	ØC	D	Material	Color	Notes
		[mm]	[mm]	[mm]	[mm]	[mm]	[mm]			
H-G2004	1	4	0.8	9.7	2.3	5.6	2.8	SBR	black	-