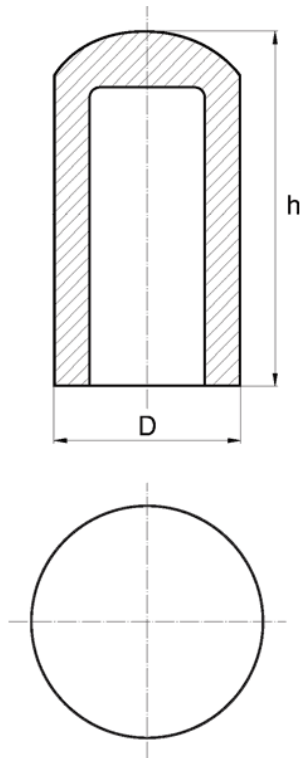


**BL-PSW - Hollow pins**



**Details:**

- **Material: Nylon (PA 66)**
- **Colour: natural**
- Materials available on special order: Nylon glass filled, PE, PP, POM
- Black and other colours available on special order
- Standard pack: 1000 pcs

Symbol	Ext. diameter D	Height h	Material	Color
	[mm]	[mm]		
BL-PSW-060-300	6	30	PA 66	natural