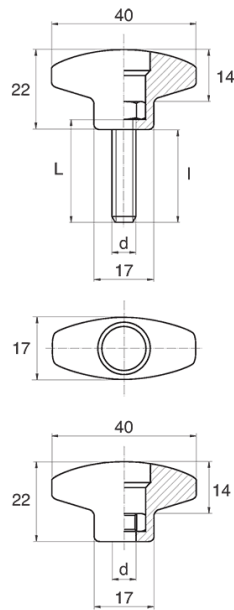


**BL-POK260 - T-handles**



**Details:**

- **Handle material: Nylon**
- **Handle colour: black**; other colours available on special order
- Thread material: see table; For type M stainless steel, brass and aluminium available on special order
- Type:
  - F - female
  - M - male
- Standard pack: 100 pcs

| Symbol           | Type | Ext. thread<br>d | Int. thread<br>d | Thread material   | L    | l ±1mm | Material | Color |
|------------------|------|------------------|------------------|-------------------|------|--------|----------|-------|
|                  |      |                  |                  |                   | [mm] | [mm]   |          |       |
| BL-POK260M-M4-12 | M    | M4               | -                | zinc-plated steel | 12   | 9      | PA       | black |