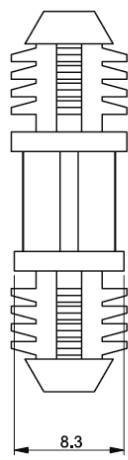
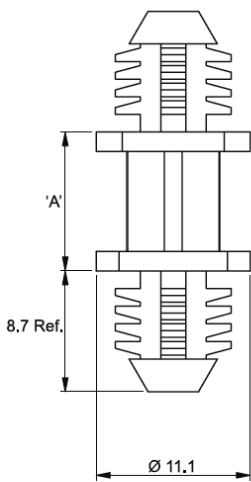


BHDF - Blind Hole Circuit Board Support



Otwór górny: $\varnothing 7.92 \pm 0.8$
Grubość panelu: min. 6.35

Otwór dolny: $\varnothing 7.92 \pm 0.08$
Grubość panelu: min. 6.35



Details:								
<ul style="list-style-type: none"> • Material and color: see table • Standard pack: 1000 pcs 								

Symbol	Height A ± 0.4	Top mounting hole dia. ± 0.08	Top panel thickness range	Bottom mounting hole dia. ± 0.08	Bottom panel thickness range	Material	Flammability	Color
	[mm]	[mm]	[mm]	[mm]	[mm]			
BHDF-8M-19	8	7.92	6.35 min.	7.92	6.35 min.	PA 66	UL94 V-0	natural