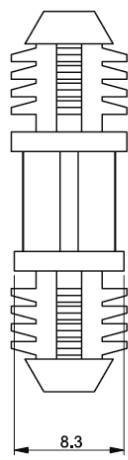
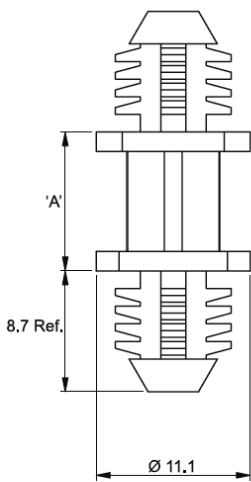


## BHDF - Blind Hole Circuit Board Support



**Otwór górny:  $\varnothing 7.92 \pm 0.8$**   
**Grubość panelu: min. 6.35**

**Otwór dolny:  $\varnothing 7.92 \pm 0.08$**   
**Grubość panelu: min. 6.35**



Details:

- **Material and color: see table**
- **Standard pack: 1000 pcs**

Symbol	Height A $\pm 0.4$	Top mounting hole dia. $\pm 0.08$	Top panel thickness range	Bottom mounting hole dia. $\pm 0.08$	Bottom panel thickness range	Material	Flammability	Color
	[mm]	[mm]	[mm]	[mm]	[mm]			
BHDF-16M-19	16	7.92	6.35 min.	7.92	6.35 min.	PA 66	UL94 V-0	natural