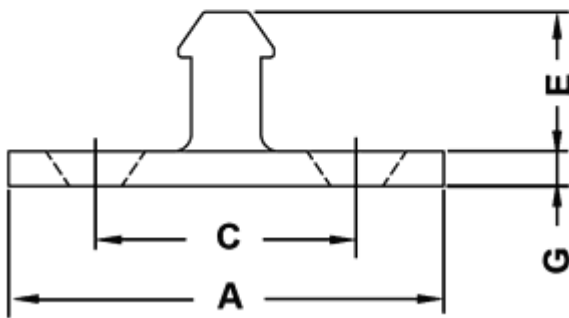
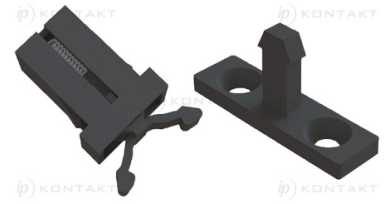
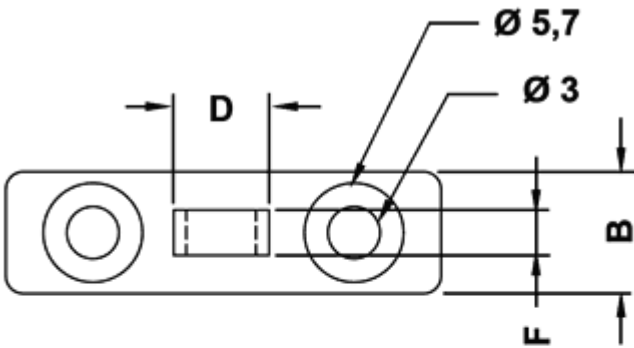
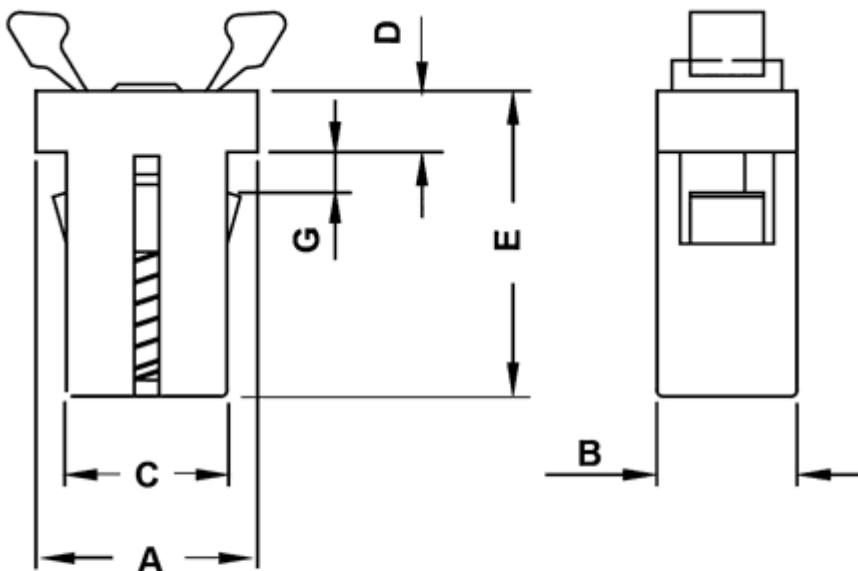


FP-4715 - Push push



5545HA01



4715GA01PS

Details:

- **Material: see table**
- Latch working temperature: -10°C do +60°C
- Stud working temperature: -30°C do +90°C
- Retention force: 1000g
- Locking force: 500g
- Suitable for flap doors on compact equipment

Symbol	A	B	C	D	E	F	G	Material	Color
	[mm]	[mm]	[mm]	[mm]	[mm]	[mm]	[mm]		
5545HA01	25	7	15	5.5	8	2.5	2.2	ABS	black