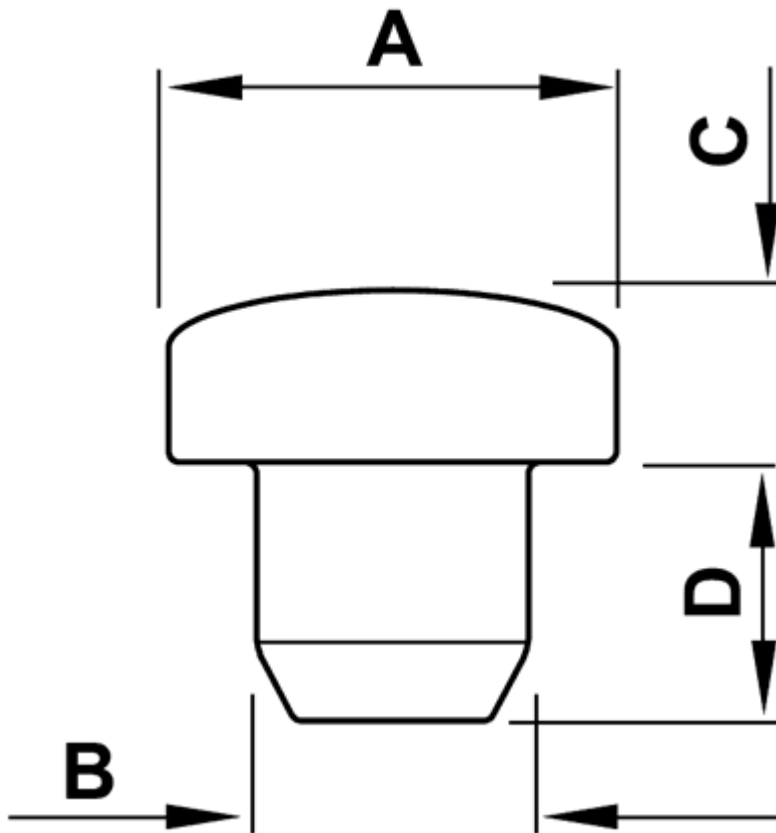


FP-4400 - Push-in feet



Details:

- **Material: TPE**
- **Color: black**
- Working temperature: -28°C do +90°C
- Material available on special order: TPE, working temperature up to +130°C
- Standard pack: 5000 pcs

Symbol	Ext. diameter A	B	C	D	Material	Color
	[mm]	[mm]	[mm]	[mm]		
4403PF01	8	4.5	5	5	TPE	black