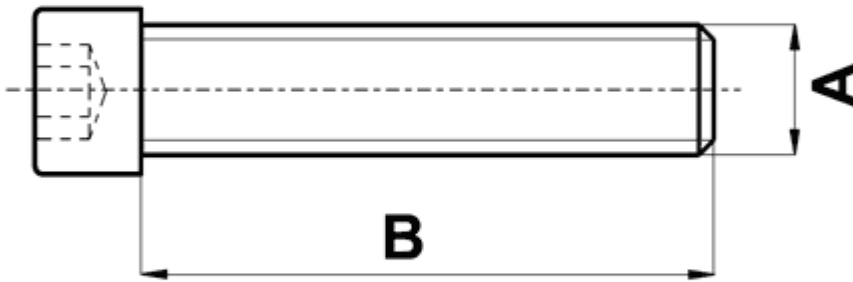


FP-10341 - Pan head screw with hexagonal socket



Details:

- **Material: PA 6**
- **Color: natural**
- **Analogical to DIN 912**
- Working temperature: -30°C to +100°C

| Symbol        | Thread<br>A | Thread length<br>B | Material | Color   |
|---------------|-------------|--------------------|----------|---------|
|               |             | [mm]               |          |         |
| 10342AA0010.0 | M4          | 10                 | PA 6     | natural |