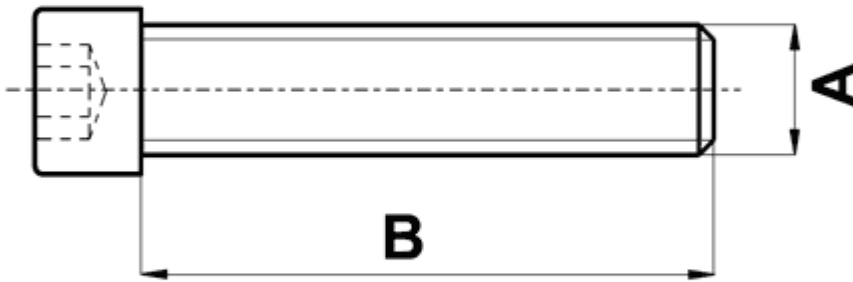


FP-10341 - Pan head screw with hexagonal socket



Details:

- **Material: PA 6**
- **Color: natural**
- **Analogical to DIN 912**
- Working temperature: -30°C to +100°C

Symbol	Thread A	Thread length B	Material	Color
		[mm]		
10341AA0010.0	M3	10	PA 6	natural