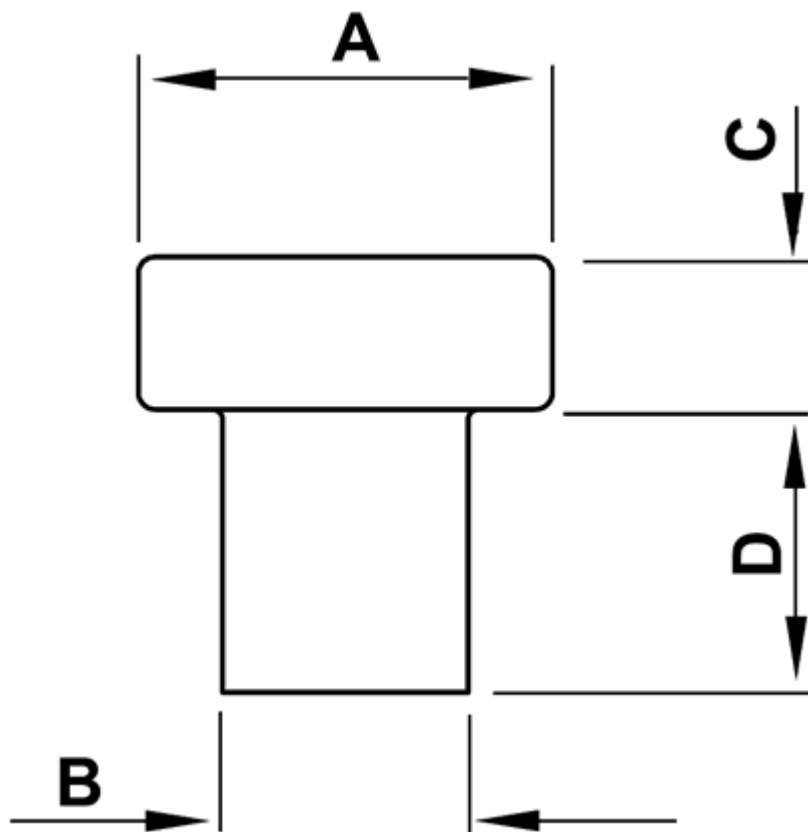


FP-0960 - Push-in feet



Details:

- **Material:** see table
- **Color:** black
- Working temperature (PVC): -25°C to +60°C
- Working temperature (LDPE): -30°C to +60°C

| Symbol | A | B | C | D | Material | Color | Standard pack |
|----------|------|------|------|------|----------|-------|---------------|
| | [mm] | [mm] | [mm] | [mm] | | | [szt./pcs] |
| 0961CA01 | Ø8.0 | Ø6.0 | 2 | 4 | Soft PVC | black | 1000 |