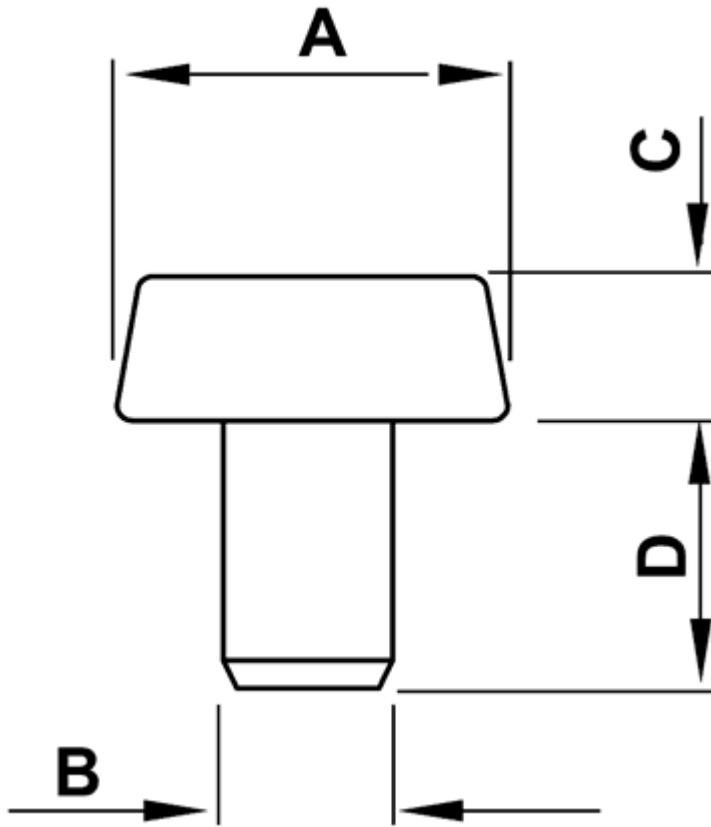


FP-0433 - Push-in feet



Details:

- **Material: Soft PVC or LDPE**
- **Color: black**
- Working temperature (PVC): -25°C to +60°C
- Working temperature (LDPE): -30°C to +60°C

| Symbol | A | ØB | C | D | Material | Color | Standard pack |
|----------|-------|------|------|------|----------|-------|---------------|
| | [mm] | [mm] | [mm] | [mm] | | | [szt./pcs] |
| 0434EA01 | Ø16.0 | 6 | 11 | 12 | LDPE | black | 2500 |