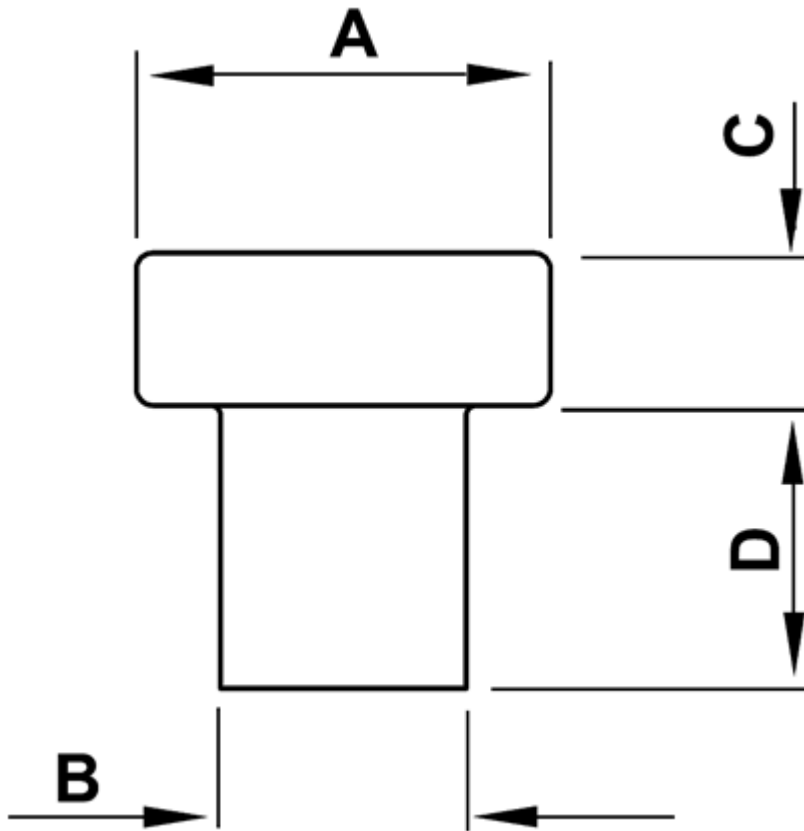


FP-0960 - Push-in feet



Details:

- **Material:** see table
- **Color:** black
- Working temperature (PVC): -25°C to +60°C
- Working temperature (LDPE): -30°C to +60°C

Symbol	A	B	C	D	Material	Color	Standard pack
	[mm]	[mm]	[mm]	[mm]			[szt./pcs]
0432EA01	15 x 10	Ø6.0	4.5	9	LDPE	black	2500