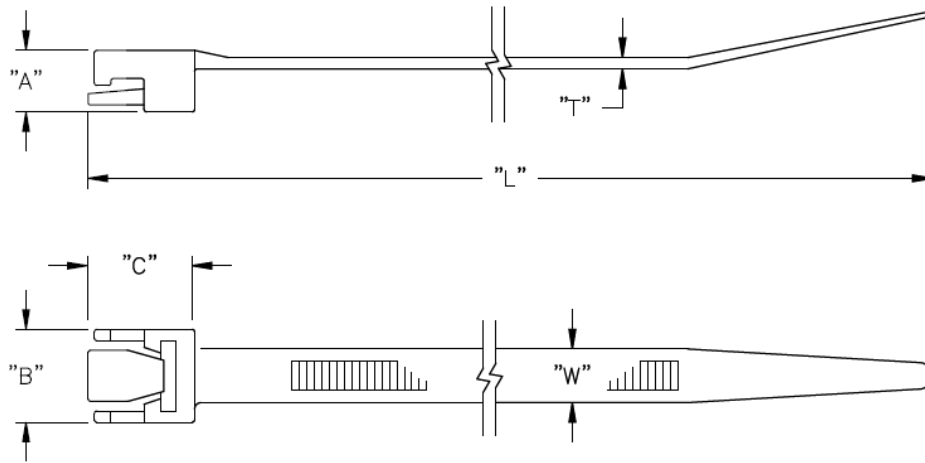


WIT-RT - Release Tab Wrap-It Tie



Details:

- **Nylon 6/6, UL94 V-2, RMS-01 ***
- **Nylon 6/6, UL94 V-2, RMS-46 ***
- **Color:** natural, black

| Symbol | Breaking force | Max. cable bundle diameter | Length L | Width W | Thickness T | A | B | C | Standard pack | Material | Flammability | Color |
|-------------|----------------|----------------------------|----------|---------|-------------|------|------|------|---------------|----------|--------------|---------|
| | [daN] | [mm] | [mm] | [mm] | [mm] | [mm] | [mm] | [mm] | [szt./pcs] | | | |
| WIT-RT-1-M | 13 | 48 | 206 | 7.6 | 1.3 | 7.8 | 11.9 | 6.8 | 1000 | PA 66 | UL94 V-2 | natural |
| WIT-RT-0550 | 18 | 31.8 | 139.7 | 5.3 | 1.3 | 6.1 | 9.1 | 11.4 | 1000 | PA 66 | UL94 V-2 | natural |
| WIT-RT-0800 | 18 | 50.8 | 203.2 | 5.3 | 1.3 | 6.1 | 9.1 | 11.4 | 1000 | PA 66 | UL94 V-2 | natural |
| WIT-RT-1050 | 18 | 63.5 | 266.7 | 5.3 | 1.3 | 6.1 | 9.1 | 11.4 | 1000 | PA 66 | UL94 V-2 | natural |
| WIT-RT-1525 | 113 | 101.6 | 387.4 | 13.2 | 2.3 | 9.7 | 20.3 | 21.8 | 25 | PA 66 | UL94 V-2 | natural |
| WIT-RT-2150 | 113 | 152.4 | 546.1 | 13.2 | 2.3 | 9.7 | 20.3 | 21.8 | 25 | PA 66 | UL94 V-2 | natural |
| WIT-RT-2775 | 113 | 203.2 | 704.9 | 13.2 | 2.3 | 9.7 | 20.3 | 21.8 | 25 | PA 66 | UL94 V-2 | natural |