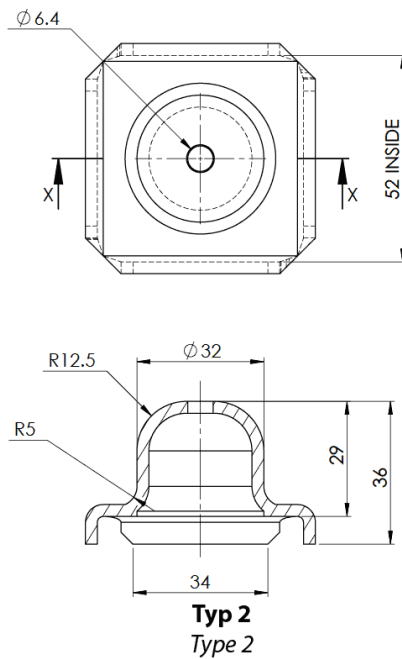
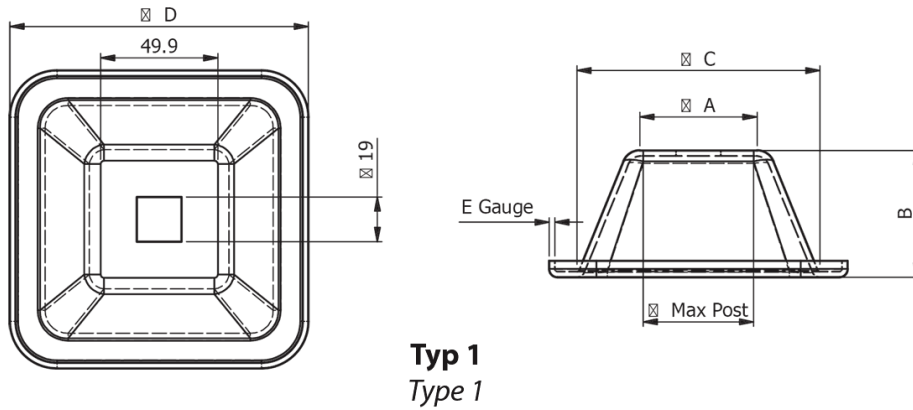


O-SPA - Pallet Feet



Details:

- Pressed Self-colour Mild Steel
- Suitable for welding onto SHS tube
- Maximum post sizes assume SHS to be used
- Maximum post sizes will be less when sharp-cornered squares are used
- Maximum strength is achieved with maximum post size
- Type 2 is stackable

Symbol	Type	A	B	Hole	C	D	E	Maximum post size [mm]	Material
		[mm]	[mm]	[mm]	[mm]	[mm]	[mm]		
O-SPA-54127	1	54	54	19	102	127	2.4	60	steel
O-SPA-60127	1	60	50.5	19	102	127	2.4	60	steel
O-SPA-54127-3	1	54	54	19	102	127	3	60	steel

Symbol	Type	A	B	Hole	C	D	E	Maximum post size	Material
		[mm]	[mm]	[mm]	[mm]	[mm]	[mm]	[mm]	
O-SPA-70165	1	70	70	19	127	165	3	80	steel
O-SPA-70165-S	1	70	70	19	127	165	3	80	stainless steel
O-SPA-3258	2	32	36	6.4	52	58	3	50	steel