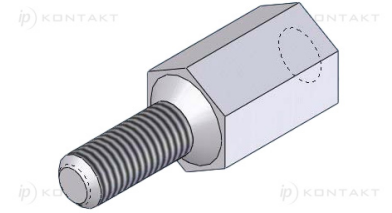
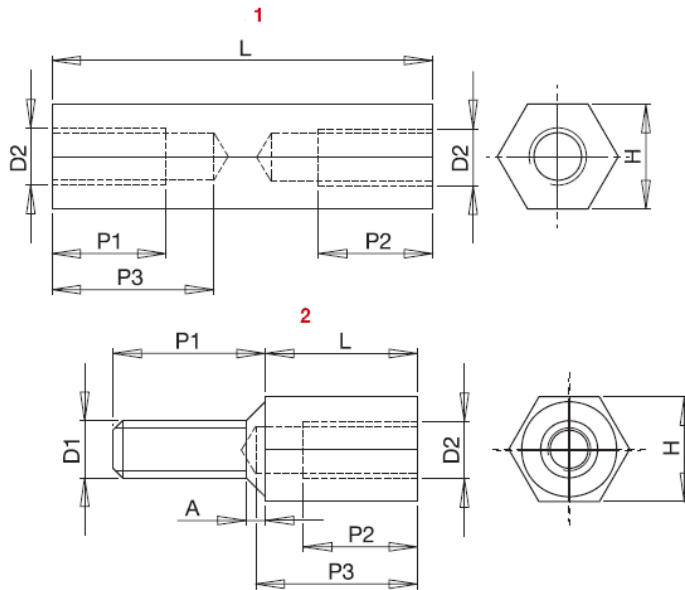


HTSM - Hexagonal Metal Standoff



Details:

- **Material** Steel, RMS-232 *, Zinc plated, RMS-236 *
- Standard pack: 100/Bag

Symbol	Ext. thread D1	Int. thread D2	Length L	Wrench size H	P1	P2	P3	A maks. [mm]	Rys.	Material
			[mm]	[mm]						
HTSM-M3-5-5-1	M3	M3	5	5	5	5	5	-	1	steel, zinc plated
HTSM-M3-8-5-1	M3	M3	8	5	8	8	8	-	1	steel, zinc plated
HTSM-M3-10-5-1	M3	M3	10	5	10	10	10	-	1	steel, zinc plated
HTSM-M3-12-5-1	M3	M3	12	5	12	12	12	-	1	steel, zinc plated
HTSM-M3-15-5-1	M3	M3	15	5	15	15	15	-	1	steel, zinc plated
HTSM-M3-18-5-1	M3	M3	18	5	18	18	18	-	1	steel, zinc plated
HTSM-M3-20-5-1	M3	M3	20	5	20	20	20	-	1	steel, zinc plated
HTSM-M3-25-5-1	M3	M3	25	5	25	25	25	-	1	steel, zinc plated
HTSM-M3-30-5-1	M3	M3	30	5	30	30	30	-	1	steel, zinc plated
HTSM-M3-35-5-1	M3	M3	35	5	10	10	15	-	1	steel, zinc plated
HTSM-M3-40-5-1	M3	M3	40	5	10	10	15	-	1	steel, zinc plated
HTSM-M3-50-5-1	M3	M3	50	5	10	10	15	-	1	steel, zinc plated
HTSM-M3-60-5-1	M3	M3	60	5	10	10	15	-	1	steel, zinc plated
HTSM-M3-70-5-1	M3	M3	70	5	10	10	15	-	1	steel, zinc plated
HTSM-M3-80-5-1	M3	M3	80	5	10	10	15	-	1	steel, zinc plated
HTSM-M3-5-5.5-1	M3	M3	5	5.5	5	5	5	-	1	steel, zinc plated
HTSM-M3-8-5.5-1	M3	M3	8	5.5	8	8	8	-	1	steel, zinc plated
HTSM-M3-10-5.5-1	M3	M3	10	5.5	10	10	10	-	1	steel, zinc plated
HTSM-M3-12-5.5-1	M3	M3	12	5.5	12	12	12	-	1	steel, zinc plated
HTSM-M3-15-5.5-1	M3	M3	15	5.5	15	15	15	-	1	steel, zinc plated
HTSM-M3-18-5.5-1	M3	M3	18	5.5	18	18	18	-	1	steel, zinc plated
HTSM-M3-20-5.5-1	M3	M3	20	5.5	20	20	20	-	1	steel, zinc plated
HTSM-M3-25-5.5-1	M3	M3	25	5.5	25	25	25	-	1	steel, zinc plated
HTSM-M3-30-5.5-1	M3	M3	30	5.5	30	30	30	-	1	steel, zinc plated
HTSM-M3-35-5.5-1	M3	M3	35	5.5	10	10	15	-	1	steel, zinc plated
HTSM-M3-40-5.5-1	M3	M3	40	5.5	10	10	15	-	1	steel, zinc plated

Symbol	Ext. thread D1	Int. thread D2	Length L	Wrench size H	P1	P2	P3	A maks.	Rys.	Material
			[mm]	[mm]	[mm]	[mm]	[mm]	[mm]		
HTSM-M3-50-5.5-1	M3	M3	50	5.5	10	10	15	-	1	steel, zinc plated
HTSM-M3-60-5.5-1	M3	M3	60	5.5	10	10	15	-	1	steel, zinc plated
HTSM-M3-70-5.5-1	M3	M3	70	5.5	10	10	15	-	1	steel, zinc plated
HTSM-M3-80-5.5-1	M3	M3	80	5.5	10	10	15	-	1	steel, zinc plated
HTSM-M4-8-7-1	M4	M4	8	7	8	8	8	-	1	steel, zinc plated
HTSM-M4-10-7-1	M4	M4	10	7	10	10	10	-	1	steel, zinc plated
HTSM-M4-12-7-1	M4	M4	12	7	12	12	12	-	1	steel, zinc plated
HTSM-M4-15-7-1	M4	M4	15	7	15	15	15	-	1	steel, zinc plated
HTSM-M4-18-7-1	M4	M4	18	7	18	18	18	-	1	steel, zinc plated
HTSM-M4-20-7-1	M4	M4	20	7	20	20	20	-	1	steel, zinc plated
HTSM-M4-25-7-1	M4	M4	25	7	25	25	25	-	1	steel, zinc plated
HTSM-M4-30-7-1	M4	M4	30	7	30	30	30	-	1	steel, zinc plated
HTSM-M4-35-7-1	M4	M4	35	7	10	10	15	-	1	steel, zinc plated
HTSM-M4-40-7-1	M4	M4	40	7	10	10	15	-	1	steel, zinc plated
HTSM-M4-50-7-1	M4	M4	50	7	10	10	15	-	1	steel, zinc plated
HTSM-M4-60-7-1	M4	M4	60	7	10	10	15	-	1	steel, zinc plated
HTSM-M4-70-7-1	M4	M4	70	7	10	10	15	-	1	steel, zinc plated
HTSM-M4-80-7-1	M4	M4	80	7	10	10	15	-	1	steel, zinc plated
HTSM-M5-10-8-1	M5	M5	10	8	10	10	10	-	1	steel, zinc plated
HTSM-M5-12-8-1	M5	M5	12	8	12	12	12	-	1	steel, zinc plated
HTSM-M5-15-8-1	M5	M5	15	8	15	15	15	-	1	steel, zinc plated
HTSM-M5-18-8-1	M5	M5	18	8	18	18	18	-	1	steel, zinc plated
HTSM-M5-20-8-1	M5	M5	20	8	20	20	20	-	1	steel, zinc plated
HTSM-M5-25-8-1	M5	M5	25	8	25	25	25	-	1	steel, zinc plated
HTSM-M5-30-8-1	M5	M5	30	8	30	30	30	-	1	steel, zinc plated
HTSM-M5-35-8-1	M5	M5	35	8	10	10	15	-	1	steel, zinc plated
HTSM-M5-40-8-1	M5	M5	40	8	10	10	15	-	1	steel, zinc plated
HTSM-M5-50-8-1	M5	M5	50	8	10	10	15	-	1	steel, zinc plated
HTSM-M5-60-8-1	M5	M5	60	8	10	10	15	-	1	steel, zinc plated
HTSM-M5-70-8-1	M5	M5	70	8	10	10	15	-	1	steel, zinc plated
HTSM-M5-80-8-1	M5	M5	80	8	10	10	15	-	1	steel, zinc plated
HTSM-M6-10-10-1	M6	M6	10	10	10	10	10	-	1	steel, zinc plated
HTSM-M6-12-10-1	M6	M6	12	10	12	12	12	-	1	steel, zinc plated
HTSM-M6-15-10-1	M6	M6	15	10	15	15	15	-	1	steel, zinc plated
HTSM-M6-18-10-1	M6	M6	18	10	18	18	18	-	1	steel, zinc plated
HTSM-M6-20-10-1	M6	M6	20	10	20	20	20	-	1	steel, zinc plated
HTSM-M6-25-10-1	M6	M6	25	10	25	25	25	-	1	steel, zinc plated
HTSM-M6-30-10-1	M6	M6	30	10	12	12	18	-	1	steel, zinc plated
HTSM-M6-35-10-1	M6	M6	35	10	12	12	18	-	1	steel, zinc plated
HTSM-M6-40-10-1	M6	M6	40	10	12	12	18	-	1	steel, zinc plated
HTSM-M6-50-10-1	M6	M6	50	10	12	12	18	-	1	steel, zinc plated
HTSM-M6-60-10-1	M6	M6	60	10	12	12	18	-	1	steel, zinc plated
HTSM-M6-70-10-1	M6	M6	70	10	12	12	18	-	1	steel, zinc plated
HTSM-M6-80-10-1	M6	M6	80	10	12	12	18	-	1	steel, zinc plated
HTSM-M3-5-5-2	M3	M3	5	5	8	3	4.3	1	2	steel, zinc plated
HTSM-M3-8-5-2	M3	M3	8	5	8	4	6.5	1	2	steel, zinc plated
HTSM-M3-10-5-2	M3	M3	10	5	8	6	8.5	1	2	steel, zinc plated
HTSM-M3-12-5-2	M3	M3	12	5	8	8	10	1	2	steel, zinc plated
HTSM-M3-15-5-2	M3	M3	15	5	8	8	13	1	2	steel, zinc plated
HTSM-M3-18-5-2	M3	M3	18	5	8	8	15	1	2	steel, zinc plated
HTSM-M3-20-5-2	M3	M3	20	5	8	8	15	1	2	steel, zinc plated
HTSM-M3-25-5-2	M3	M3	25	5	10	10	15	1	2	steel, zinc plated
HTSM-M3-30-5-2	M3	M3	30	5	10	10	15	1	2	steel, zinc plated
HTSM-M3-35-5-2	M3	M3	35	5	10	10	15	1	2	steel, zinc plated

Symbol	Ext. thread D1	Int. thread D2	Length L	Wrench size H	P1	P2	P3	A maks.	Rys.	Material
			[mm]	[mm]	[mm]	[mm]	[mm]	[mm]		
HTSM-M3-40-5-2	M3	M3	40	5	10	10	15	1	2	steel, zinc plated
HTSM-M3-50-5-2	M3	M3	50	5	10	10	15	1	2	steel, zinc plated
HTSM-M3-60-5-2	M3	M3	60	5	10	10	15	1	2	steel, zinc plated
HTSM-M3-70-5-2	M3	M3	70	5	10	10	15	1	2	steel, zinc plated
HTSM-M3-80-5-2	M3	M3	80	5	10	10	15	1	2	steel, zinc plated
HTSM-M3-5-5.5-2	M3	M3	5	5.5	8	3	4.3	1	2	steel, zinc plated
HTSM-M3-8-5.5-2	M3	M3	8	5.5	8	4	6.5	1	2	steel, zinc plated
HTSM-M3-10-5.5-2	M3	M3	10	5.5	8	6	8.5	1	2	steel, zinc plated
HTSM-M3-12-5.5-2	M3	M3	12	5.5	8	8	10	1	2	steel, zinc plated
HTSM-M3-15-5.5-2	M3	M3	15	5.5	8	8	13	1	2	steel, zinc plated
HTSM-M3-18-5.5-2	M3	M3	18	5.5	8	8	15	1	2	steel, zinc plated
HTSM-M3-20-5.5-2	M3	M3	20	5.5	8	8	15	1	2	steel, zinc plated
HTSM-M3-25-5.5-2	M3	M3	25	5.5	10	10	15	1	2	steel, zinc plated
HTSM-M3-30-5.5-2	M3	M3	30	5.5	10	10	15	1	2	steel, zinc plated
HTSM-M3-35-5.5-2	M3	M3	35	5.5	10	10	15	1	2	steel, zinc plated
HTSM-M3-40-5.5-2	M3	M3	40	5.5	10	10	15	1	2	steel, zinc plated
HTSM-M3-50-5.5-2	M3	M3	50	5.5	10	10	15	1	2	steel, zinc plated
HTSM-M3-60-5.5-2	M3	M3	60	5.5	10	10	15	1	2	steel, zinc plated
HTSM-M3-70-5.5-2	M3	M3	70	5.5	10	10	15	1	2	steel, zinc plated
HTSM-M3-80-5.5-2	M3	M3	80	5.5	10	10	15	1	2	steel, zinc plated
HTSM-M4-8-7-2	M4	M4	8	7	8	4	6.5	1.4	2	steel, zinc plated
HTSM-M4-10-7-2	M4	M4	10	7	8	6	8.5	1.4	2	steel, zinc plated
HTSM-M4-12-7-2	M4	M4	12	7	8	8	10	1.4	2	steel, zinc plated
HTSM-M4-15-7-2	M4	M4	15	7	8	8	13	1.4	2	steel, zinc plated
HTSM-M4-18-7-2	M4	M4	18	7	8	8	15	1.4	2	steel, zinc plated
HTSM-M4-20-7-2	M4	M4	20	7	8	8	15	1.4	2	steel, zinc plated
HTSM-M4-25-7-2	M4	M4	25	7	10	10	15	1.4	2	steel, zinc plated
HTSM-M4-30-7-2	M4	M4	30	7	10	10	15	1.4	2	steel, zinc plated
HTSM-M4-35-7-2	M4	M4	35	7	10	10	15	1.4	2	steel, zinc plated
HTSM-M4-40-7-2	M4	M4	40	7	10	10	15	1.4	2	steel, zinc plated
HTSM-M4-50-7-2	M4	M4	50	7	10	10	15	1.4	2	steel, zinc plated
HTSM-M4-60-7-2	M4	M4	60	7	10	10	15	1.4	2	steel, zinc plated
HTSM-M4-70-7-2	M4	M4	70	7	10	10	15	1.4	2	steel, zinc plated
HTSM-M4-80-7-2	M4	M4	80	7	10	10	15	1.4	2	steel, zinc plated
HTSM-M5-10-8-2	M5	M5	10	8	8	6	8.5	1.6	2	steel, zinc plated
HTSM-M5-12-8-2	M5	M5	12	8	8	8	10	1.6	2	steel, zinc plated
HTSM-M5-15-8-2	M5	M5	15	8	8	8	13	1.6	2	steel, zinc plated
HTSM-M5-18-8-2	M5	M5	18	8	8	8	15	1.6	2	steel, zinc plated
HTSM-M5-20-8-2	M5	M5	20	8	8	8	15	1.6	2	steel, zinc plated
HTSM-M5-25-8-2	M5	M5	25	8	10	10	15	1.6	2	steel, zinc plated
HTSM-M5-30-8-2	M5	M5	30	8	10	10	15	1.6	2	steel, zinc plated
HTSM-M5-35-8-2	M5	M5	35	8	10	10	15	1.6	2	steel, zinc plated
HTSM-M5-40-8-2	M5	M5	40	8	10	10	15	1.6	2	steel, zinc plated
HTSM-M5-50-8-2	M5	M5	50	8	10	10	15	1.6	2	steel, zinc plated
HTSM-M5-60-8-2	M5	M5	60	8	10	10	15	1.6	2	steel, zinc plated
HTSM-M5-70-8-2	M5	M5	70	8	10	10	15	1.6	2	steel, zinc plated
HTSM-M5-80-8-2	M5	M5	80	8	10	10	15	1.6	2	steel, zinc plated
HTSM-M6-10-10-2	M6	M6	10	10	12	6	8.5	2	2	steel, zinc plated
HTSM-M6-12-10-2	M6	M6	12	10	12	8	10	2	2	steel, zinc plated
HTSM-M6-15-10-2	M6	M6	15	10	12	8	13	2	2	steel, zinc plated
HTSM-M6-18-10-2	M6	M6	18	10	12	8	16	2	2	steel, zinc plated
HTSM-M6-20-10-2	M6	M6	20	10	12	8	18	2	2	steel, zinc plated
HTSM-M6-25-10-2	M6	M6	25	10	12	10	18	2	2	steel, zinc plated
HTSM-M6-30-10-2	M6	M6	30	10	12	10	18	2	2	steel, zinc plated

Symbol	Ext. thread D1	Int. thread D2	Length L	Wrench size H	P1	P2	P3	A maks.	Rys.	Material
			[mm]	[mm]	[mm]	[mm]	[mm]	[mm]		
HTSM-M6-35-10-2	M6	M6	35	10	12	10	18	2	2	steel, zinc plated
HTSM-M6-40-10-2	M6	M6	40	10	12	10	18	2	2	steel, zinc plated
HTSM-M6-50-10-2	M6	M6	50	10	12	10	18	2	2	steel, zinc plated
HTSM-M6-60-10-2	M6	M6	60	10	12	10	18	2	2	steel, zinc plated
HTSM-M6-70-10-2	M6	M6	70	10	12	10	18	2	2	steel, zinc plated
HTSM-M6-80-10-2	M6	M6	80	10	12	10	18	2	2	steel, zinc plated