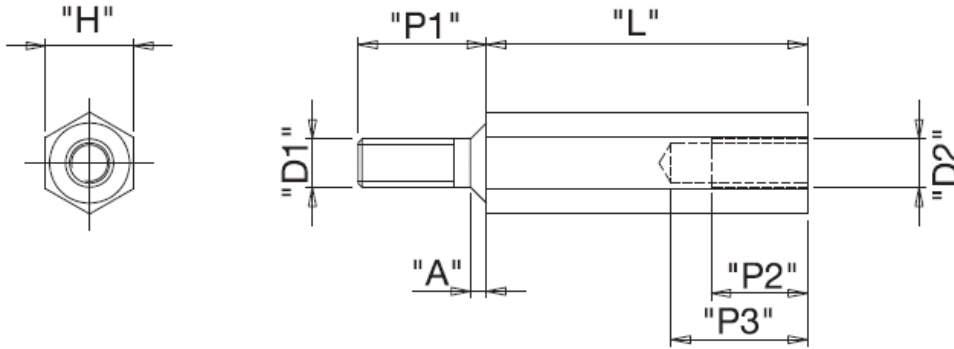


## HTSB-2 - Hexagonal brass standoffs



Details:

- **Material: Brass RMS-260\***
- **Nickel Plating, RMS-234\***
- **Standard pack: 100 pcs**

Symbol	Ext. thread D1	Int. thread D2	Wrench size H	Length L	P1	P2	P3	A maks.	Material
			[mm]	[mm]	[mm]	[mm]	[mm]	[mm]	
HTSB-M2-5-4-2	M2	M2	4	5	6.0	3.0	4.3	0.8	brass, nickel plated
HTSB-M2-8-4-2	M2	M2	4	8	6.0	4.0	6.5	0.8	brass, nickel plated
HTSB-M2-10-4-2	M2	M2	4	10	6.0	6.0	8.5	0.8	brass, nickel plated
HTSB-M2-12-4-2	M2	M2	4	12	6.0	8.0	10.0	0.8	brass, nickel plated
HTSB-M2-15-4-2	M2	M2	4	15	6.0	8.0	13.0	0.8	brass, nickel plated
HTSB-M2-18-4-2	M2	M2	4	18	6.0	8.0	13.0	0.8	brass, nickel plated
HTSB-M2-20-4-2	M2	M2	4	20	6.0	8.0	13.0	0.8	brass, nickel plated
HTSB-M2-25-4-2	M2	M2	4	25	6.0	10.0	13.0	0.8	brass, nickel plated
HTSB-M2-30-4-2	M2	M2	4	30	6.0	10.0	13.0	0.8	brass, nickel plated
HTSB-M2-35-4-2	M2	M2	4	35	6.0	10.0	13.0	0.8	brass, nickel plated
HTSB-M2-40-4-2	M2	M2	4	40	6.0	10.0	13.0	0.8	brass, nickel plated
HTSB-M2.5-5-5-2	M2.5	M2.5	5	5	6.0	3.0	4.3	0.9	brass, nickel plated
HTSB-M2.5-8-5-2	M2.5	M2.5	5	8	6.0	4.0	6.5	0.9	brass, nickel plated
HTSB-M2.5-10-5-2	M2.5	M2.5	5	10	6.0	6.0	8.5	0.9	brass, nickel plated
HTSB-M2.5-12-5-2	M2.5	M2.5	5	12	6.0	8.0	10.0	0.9	brass, nickel plated
HTSB-M2.5-15-5-2	M2.5	M2.5	5	15	6.0	8.0	13.0	0.9	brass, nickel plated
HTSB-M2.5-18-5-2	M2.5	M2.5	5	18	6.0	8.0	13.0	0.9	brass, nickel plated
HTSB-M2.5-20-5-2	M2.5	M2.5	5	20	6.0	8.0	13.0	0.9	brass, nickel plated
HTSB-M2.5-25-5-2	M2.5	M2.5	5	25	6.0	10.0	13.0	0.9	brass, nickel plated
HTSB-M2.5-30-5-2	M2.5	M2.5	5	30	6.0	10.0	13.0	0.9	brass, nickel plated
HTSB-M2.5-35-5-2	M2.5	M2.5	5	35	6.0	10.0	13.0	0.9	brass, nickel plated
HTSB-M2.5-40-5-2	M2.5	M2.5	5	40	6.0	10.0	13.0	0.9	brass, nickel plated

Symbol	Ext. thread D1	Int. thread D2	Wrench size H	Length L	P1	P2	P3	A maks.	Material
			[mm]	[mm]	[mm]	[mm]	[mm]	[mm]	
HTSB-M3-5-5-2	M3	M3	5	5	8.0	3.0	4.3	1	brass, nickel plated
HTSB-M3-8-5-2	M3	M3	5	8	8.0	4.0	6.5	1	brass, nickel plated
HTSB-M3-10-5-2	M3	M3	5	10	8.0	6.0	8.5	1	brass, nickel plated
HTSB-M3-11-5-2	M3	M3	5	11	8.0	6.0	8.5	1	brass, nickel plated
HTSB-M3-12-5-2	M3	M3	5	12	8.0	8.0	10.0	1	brass, nickel plated
HTSB-M3-15-5-2	M3	M3	5	15	8.0	8.0	13.0	1	brass, nickel plated
HTSB-M3-18-5-2	M3	M3	5	18	8.0	8.0	15.0	1	brass, nickel plated
HTSB-M3-20-5-2	M3	M3	5	20	8.0	8.0	15.0	1	brass, nickel plated
HTSB-M3-25-5-2	M3	M3	5	25	10.0	10.0	15.0	1	brass, nickel plated
HTSB-M3-30-5-2	M3	M3	5	30	10.0	10.0	15.0	1	brass, nickel plated
HTSB-M3-35-5-2	M3	M3	5	35	10.0	10.0	15.0	1	brass, nickel plated
HTSB-M3-40-5-2	M3	M3	5	40	10.0	10.0	15.0	1	brass, nickel plated
HTSB-M3-50-5-2	M3	M3	5	50	10.0	10.0	15.0	1	brass, nickel plated
HTSB-M3-60-5-2	M3	M3	5	60	10.0	10.0	15.0	1	brass, nickel plated
HTSB-M3-70-5-2	M3	M3	5	70	10.0	10.0	15.0	1	brass, nickel plated
HTSB-M3-80-5-2	M3	M3	5	80	10.0	10.0	15.0	1	brass, nickel plated
HTSB-M3-5-5.5-2	M3	M3	5.5	5	8.0	3.0	4.3	1	brass, nickel plated
HTSB-M3-8-5.5-2	M3	M3	5.5	8	8.0	4.0	6.5	1	brass, nickel plated
HTSB-M3-10-5.5-2	M3	M3	5.5	10	8.0	6.0	8.5	1	brass, nickel plated
HTSB-M3-12-5.5-2	M3	M3	5.5	12	8.0	8.0	10.0	1	brass, nickel plated
HTSB-M3-15-5.5-2	M3	M3	5.5	15	8.0	8.0	13.0	1	brass, nickel plated
HTSB-M3-18-5.5-2	M3	M3	5.5	18	8.0	8.0	15.0	1	brass, nickel plated
HTSB-M3-20-5.5-2	M3	M3	5.5	20	8.0	8.0	15.0	1	brass, nickel plated
HTSB-M3-25-5.5-2	M3	M3	5.5	25	10.0	10.0	15.0	1	brass, nickel plated
HTSB-M3-30-5.5-2	M3	M3	5.5	30	10.0	10.0	15.0	1	brass, nickel plated
HTSB-M3-35-5.5-2	M3	M3	5.5	35	10.0	10.0	15.0	1	brass, nickel plated
HTSB-M3-40-5.5-2	M3	M3	5.5	40	10.0	10.0	15.0	1	brass, nickel plated
HTSB-M3-50-5.5-2	M3	M3	5.5	50	10.0	10.0	15.0	1	brass, nickel plated
HTSB-M3-60-5.5-2	M3	M3	5.5	60	10.0	10.0	15.0	1	brass, nickel plated
HTSB-M3-70-5.5-2	M3	M3	5.5	70	10.0	10.0	15.0	1	brass, nickel plated
HTSB-M3-80-5.5-2	M3	M3	5.5	80	10.0	10.0	15.0	1	brass, nickel plated
HTSB-M4-5-7-2	M4	M4	7	5	8.0	3.0	4.3	1.4	brass, nickel plated
HTSB-M4-8-7-2	M4	M4	7	8	8.0	4.0	6.5	1.4	brass, nickel plated
HTSB-M4-10-7-2	M4	M4	7	10	8.0	6.0	8.5	1.4	brass, nickel plated
HTSB-M4-12-7-2	M4	M4	7	12	8.0	8.0	10.0	1.4	brass, nickel plated
HTSB-M4-15-7-2	M4	M4	7	15	8.0	8.0	13.0	1.4	brass, nickel plated
HTSB-M4-18-7-2	M4	M4	7	18	8.0	8.0	15.0	1.4	brass, nickel plated
HTSB-M4-20-7-2	M4	M4	7	20	8.0	8.0	15.0	1.4	brass, nickel plated
HTSB-M4-25-7-2	M4	M4	7	25	10.0	10.0	15.0	1.4	brass, nickel plated
HTSB-M4-30-7-2	M4	M4	7	30	10.0	10.0	15.0	1.4	brass, nickel plated
HTSB-M4-35-7-2	M4	M4	7	35	10.0	10.0	15.0	1.4	brass, nickel plated
HTSB-M4-40-7-2	M4	M4	7	40	10.0	10.0	15.0	1.4	brass, nickel plated
HTSB-M4-50-7-2	M4	M4	7	50	10.0	10.0	15.0	1.4	brass, nickel plated
HTSB-M4-60-7-2	M4	M4	7	60	10.0	10.0	15.0	1.4	brass, nickel plated
HTSB-M4-70-7-2	M4	M4	7	70	10.0	10.0	15.0	1.4	brass, nickel plated
HTSB-M4-80-7-2	M4	M4	7	80	10.0	10.0	15.0	1.4	brass, nickel plated
HTSB-M5-5-8-2	M5	M5	8	5	8.0	3.0	4.3	1.6	brass, nickel plated
HTSB-M5-8-8-2	M5	M5	8	8	8.0	4.0	6.5	1.6	brass, nickel plated
HTSB-M5-10-8-2	M5	M5	8	10	8.0	6.0	8.5	1.6	brass, nickel plated
HTSB-M5-12-8-2	M5	M5	8	12	8.0	8.0	10.0	1.6	brass, nickel plated
HTSB-M5-15-8-2	M5	M5	8	15	8.0	8.0	13.0	1.6	brass, nickel plated
HTSB-M5-18-8-2	M5	M5	8	18	8.0	8.0	15.0	1.6	brass, nickel plated
HTSB-M5-20-8-2	M5	M5	8	20	8.0	8.0	15.0	1.6	brass, nickel plated
HTSB-M5-25-8-2	M5	M5	8	25	10.0	10.0	15.0	1.6	brass, nickel plated

Symbol	Ext. thread D1	Int. thread D2	Wrench size H	Length L	P1	P2	P3	A maks.	Material
			[mm]	[mm]	[mm]	[mm]	[mm]	[mm]	
HTSB-M5-30-8-2	M5	M5	8	30	10.0	10.0	15.0	1.6	brass, nickel plated
HTSB-M5-35-8-2	M5	M5	8	35	10.0	10.0	15.0	1.6	brass, nickel plated
HTSB-M5-40-8-2	M5	M5	8	40	10.0	10.0	15.0	1.6	brass, nickel plated
HTSB-M5-50-8-2	M5	M5	8	50	10.0	10.0	15.0	1.6	brass, nickel plated
HTSB-M5-60-8-2	M5	M5	8	60	10.0	10.0	15.0	1.6	brass, nickel plated
HTSB-M5-70-8-2	M5	M5	8	70	10.0	10.0	15.0	1.6	brass, nickel plated
HTSB-M5-80-8-2	M5	M5	8	80	10.0	10.0	15.0	1.6	brass, nickel plated