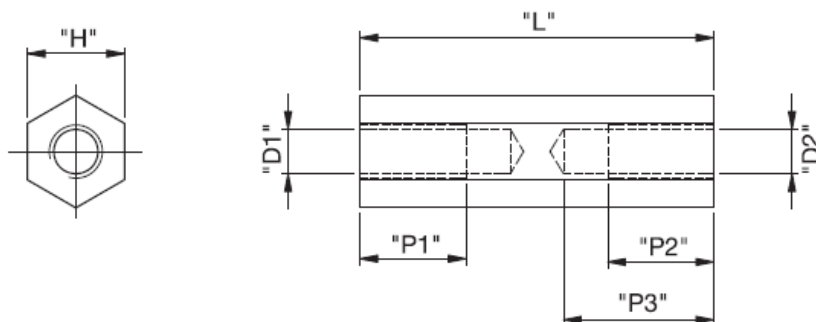


## HTSB-1 - Hexagonal Metal Standoff



### Details:

- **Material: Brass RMS-260\***
- **Nickel Plating, RMS-234\***
- **Standard pack: 100 pcs**

Symbol	Int. thread D1 = D2	Wrench size H	Height L	P1	P2	P3	Material
		[mm]	[mm]	[mm]	[mm]	[mm]	
HTSB-M2-5-4-1	M2	4	5	through	through	through	brass, nickel plated
HTSB-M2-8-4-1	M2	4	8	through	through	through	brass, nickel plated
HTSB-M2-10-4-1	M2	4	10	through	through	through	brass, nickel plated
HTSB-M2-12-4-1	M2	4	12	through	through	through	brass, nickel plated
HTSB-M2-15-4-1	M2	4	15	through	through	through	brass, nickel plated
HTSB-M2-18-4-1	M2	4	18	through	through	through	brass, nickel plated
HTSB-M2-20-4-1	M2	4	20	through	through	through	brass, nickel plated
HTSB-M2-25-4-1	M2	4	25	through	through	through	brass, nickel plated
HTSB-M2-30-4-1	M2	4	30	8.0	8.0	13.0	brass, nickel plated
HTSB-M2-35-4-1	M2	4	35	8.0	8.0	13.0	brass, nickel plated
HTSB-M2-40-4-1	M2	4	40	8.0	8.0	13.0	brass, nickel plated
HTSB-M2.5-5-5-1	M2.5	5	5	through	through	through	brass, nickel plated
HTSB-M2.5-8-5-1	M2.5	5	8	through	through	through	brass, nickel plated
HTSB-M2.5-10-5-1	M2.5	5	10	through	through	through	brass, nickel plated
HTSB-M2.5-12-5-1	M2.5	5	12	through	through	through	brass, nickel plated
HTSB-M2.5-15-5-1	M2.5	5	15	through	through	through	brass, nickel plated
HTSB-M2.5-18-5-1	M2.5	5	18	through	through	through	brass, nickel plated
HTSB-M2.5-20-5-1	M2.5	5	20	through	through	through	brass, nickel plated
HTSB-M2.5-25-5-1	M2.5	5	25	through	through	through	brass, nickel plated
HTSB-M2.5-30-5-1	M2.5	5	30	8.0	8.0	13.0	brass, nickel plated
HTSB-M2.5-35-5-1	M2.5	5	35	8.0	8.0	13.0	brass, nickel plated
HTSB-M2.5-40-5-1	M2.5	5	40	8.0	8.0	13.0	brass, nickel plated

Symbol	Int. thread D1 = D2	Wrench size H	Height L	P1	P2	P3	Material
		[mm]	[mm]	[mm]	[mm]	[mm]	
HTSB-M3-5-5-1	M3	5	5	through	through	through	brass, nickel plated
HTSB-M3-8-5-1	M3	5	8	through	through	through	brass, nickel plated
HTSB-M3-10-5-1	M3	5	10	through	through	through	brass, nickel plated
HTSB-M3-12-5-1	M3	5	12	through	through	through	brass, nickel plated
HTSB-M3-15-5-1	M3	5	15	through	through	through	brass, nickel plated
HTSB-M3-18-5-1	M3	5	18	through	through	through	brass, nickel plated
HTSB-M3-20-5-1	M3	5	20	through	through	through	brass, nickel plated
HTSB-M3-25-5-1	M3	5	25	through	through	through	brass, nickel plated
HTSB-M3-30-5-1	M3	5	30	through	through	through	brass, nickel plated
HTSB-M3-35-5-1	M3	5	35	min. 10	min. 10	15.0	brass, nickel plated
HTSB-M3-40-5-1	M3	5	40	min. 10	min. 10	15.0	brass, nickel plated
HTSB-M3-50-5-1	M3	5	50	min. 10	min. 10	15.0	brass, nickel plated
HTSB-M3-60-5-1	M3	5	60	min. 10	min. 10	15.0	brass, nickel plated
HTSB-M3-70-5-1	M3	5	70	min. 10	min. 10	15.0	brass, nickel plated
HTSB-M3-80-5-1	M3	5	80	min. 10	min. 10	15.0	brass, nickel plated
HTSB-M3-5-5.5-1	M3	5.5	5	through	through	through	brass, nickel plated
HTSB-M3-8-5.5-1	M3	5.5	8	through	through	through	brass, nickel plated
HTSB-M3-10-5.5-1	M3	5.5	10	through	through	through	brass, nickel plated
HTSB-M3-12-5.5-1	M3	5.5	12	through	through	through	brass, nickel plated
HTSB-M3-15-5.5-1	M3	5.5	15	through	through	through	brass, nickel plated
HTSB-M3-18-5.5-1	M3	5.5	18	through	through	through	brass, nickel plated
HTSB-M3-20-5.5-1	M3	5.5	20	through	through	through	brass, nickel plated
HTSB-M3-25-5.5-1	M3	5.5	25	through	through	through	brass, nickel plated
HTSB-M3-30-5.5-1	M3	5.5	30	through	through	through	brass, nickel plated
HTSB-M3-35-5.5-1	M3	5.5	35	min. 10	min. 10	15.0	brass, nickel plated
HTSB-M3-40-5.5-1	M3	5.5	40	min. 10	min. 10	15.0	brass, nickel plated
HTSB-M3-50-5.5-1	M3	5.5	50	min. 10	min. 10	15.0	brass, nickel plated
HTSB-M3-60-5.5-1	M3	5.5	60	min. 10	min. 10	15.0	brass, nickel plated
HTSB-M3-70-5.5-1	M3	5.5	70	min. 10	min. 10	15.0	brass, nickel plated
HTSB-M3-80-5.5-1	M3	5.5	80	min. 10	min. 10	15.0	brass, nickel plated
HTSB-M4-5-7-1	M4	7	5	through	through	through	brass, nickel plated
HTSB-M4-8-7-1	M4	7	8	through	through	through	brass, nickel plated
HTSB-M4-10-7-1	M4	7	10	through	through	through	brass, nickel plated
HTSB-M4-12-7-1	M4	7	12	through	through	through	brass, nickel plated
HTSB-M4-15-7-1	M4	7	15	through	through	through	brass, nickel plated
HTSB-M4-18-7-1	M4	7	18	through	through	through	brass, nickel plated
HTSB-M4-20-7-1	M4	7	20	through	through	through	brass, nickel plated
HTSB-M4-25-7-1	M4	7	25	through	through	through	brass, nickel plated
HTSB-M4-30-7-1	M4	7	30	through	through	through	brass, nickel plated
HTSB-M4-35-7-1	M4	7	35	min. 10	min. 10	15.0	brass, nickel plated
HTSB-M4-40-7-1	M4	7	40	min. 10	min. 10	15.0	brass, nickel plated
HTSB-M4-50-7-1	M4	7	50	min. 10	min. 10	15.0	brass, nickel plated
HTSB-M4-60-7-1	M4	7	60	min. 10	min. 10	15.0	brass, nickel plated
HTSB-M4-70-7-1	M4	7	70	min. 10	min. 10	15.0	brass, nickel plated
HTSB-M4-80-7-1	M4	7	80	min. 10	min. 10	15.0	brass, nickel plated
HTSB-M5-5-8-1	M5	8	5	through	through	through	brass, nickel plated
HTSB-M5-8-8-1	M5	8	8	through	through	through	brass, nickel plated
HTSB-M5-10-8-1	M5	8	10	through	through	through	brass, nickel plated
HTSB-M5-12-8-1	M5	8	12	through	through	through	brass, nickel plated
HTSB-M5-15-8-1	M5	8	15	through	through	through	brass, nickel plated
HTSB-M5-18-8-1	M5	8	18	through	through	through	brass, nickel plated
HTSB-M5-20-8-1	M5	8	20	through	through	through	brass, nickel plated
HTSB-M5-25-8-1	M5	8	25	through	through	through	brass, nickel plated
HTSB-M5-30-8-1	M5	8	30	through	through	through	brass, nickel plated

Symbol	Int. thread D1 = D2	Wrench size H	Height L	P1	P2	P3	Material
		[mm]	[mm]	[mm]	[mm]	[mm]	
HTSB-M5-35-8-1	M5	8	35	min. 10	min. 10	15.0	brass, nickel plated
HTSB-M5-40-8-1	M5	8	40	min. 10	min. 10	15.0	brass, nickel plated
HTSB-M5-50-8-1	M5	8	50	min. 10	min. 10	15.0	brass, nickel plated
HTSB-M5-60-8-1	M5	8	60	min. 10	min. 10	15.0	brass, nickel plated
HTSB-M5-70-8-1	M5	8	70	min. 10	min. 10	15.0	brass, nickel plated
HTSB-M5-80-8-1	M5	8	80	min. 10	min. 10	15.0	brass, nickel plated