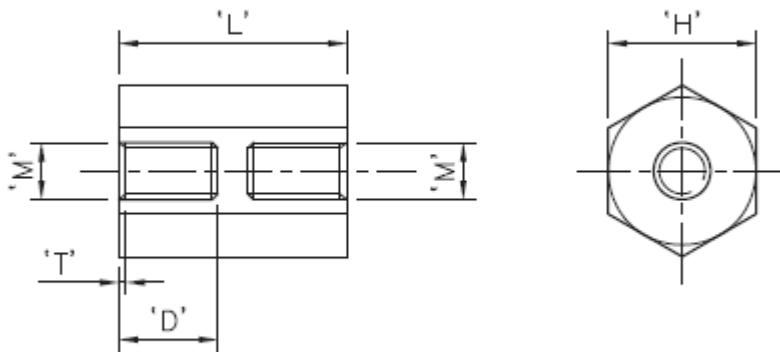


## HSM-1 - Metric Hex Low Voltage Insulators



### Details:

- **Body material: PA 66**
- **Threads material: brass**
- **Body color: natural**
- Unthreaded length: max. 1.5 mm
- MOQ: 100 pcs

Symbol	Int. thread M	Length L	Wrench size H	Int. thread length D	T	Material
		[mm]	[mm]	[mm]	[mm]	
HSM2.5-6.4-15-1	M2.5	15	6.4	6	0.68	PA 66, brass
HSM2.5-6.4-20-1	M2.5	20	6.4	6	0.68	PA 66, brass
HSM2.5-6.4-25-1	M2.5	25	6.4	6	0.68	PA 66, brass
HSM3-6.4-15-1	M3	15	6.4	6	0.75	PA 66, brass
HSM3-6.4-18-1	M3	18	6.4	6	0.75	PA 66, brass
HSM3-6.4-20-1	M3	20	6.4	6	0.75	PA 66, brass
HSM3-6.4-25-1	M3	25	6.4	6	0.75	PA 66, brass
HSM3-6.4-30-1	M3	30	6.4	6	0.75	PA 66, brass
HSM3-6.4-40-1	M3	40	6.4	6	0.75	PA 66, brass
HSM3-6.4-45-1	M3	45	6.4	6	0.75	PA 66, brass
HSM4-8-15-1	M4	15	8	6	1.05	PA 66, brass
HSM4-8-18-1	M4	18	8	6	1.05	PA 66, brass
HSM4-8-20-1	M4	20	8	6	1.05	PA 66, brass
HSM4-8-25-1	M4	25	8	6	1.05	PA 66, brass
HSM4-8-30-1	M4	30	8	6	1.05	PA 66, brass
HSM4-8-40-1	M4	40	8	6	1.05	PA 66, brass
HSM4-8-45-1	M4	45	8	6	1.05	PA 66, brass
HSM4-8-50-1	M4	50	8	6	1.05	PA 66, brass
HSM5-9.5-20-1	M5	20	9.5	10	1.2	PA 66, brass
HSM5-9.5-25-1	M5	25	9.5	10	1.2	PA 66, brass
HSM5-9.5-30-1	M5	30	9.5	10	1.2	PA 66, brass
HSM5-9.5-40-1	M5	40	9.5	10	1.2	PA 66, brass
HSM5-9.5-45-1	M5	45	9.5	10	1.2	PA 66, brass
HSM5-9.5-50-1	M5	50	9.5	10	1.2	PA 66, brass

Symbol	Int. thread M	Length L	Wrench size H	Int. thread length D	T	Material
		[mm]	[mm]	[mm]	[mm]	
HSM6-12.7-25-1	M6	25	12.7	12.7	1.5	PA 66, brass
HSM6-12.7-30-1	M6	30	12.7	12.7	1.5	PA 66, brass
HSM6-12.7-40-1	M6	40	12.7	12.7	1.5	PA 66, brass
HSM6-12.7-45-1	M6	45	12.7	12.7	1.5	PA 66, brass
HSM6-12.7-50-1	M6	50	12.7	12.7	1.5	PA 66, brass
HSM6-12.7-55-1	M6	55	12.7	12.7	1.5	PA 66, brass