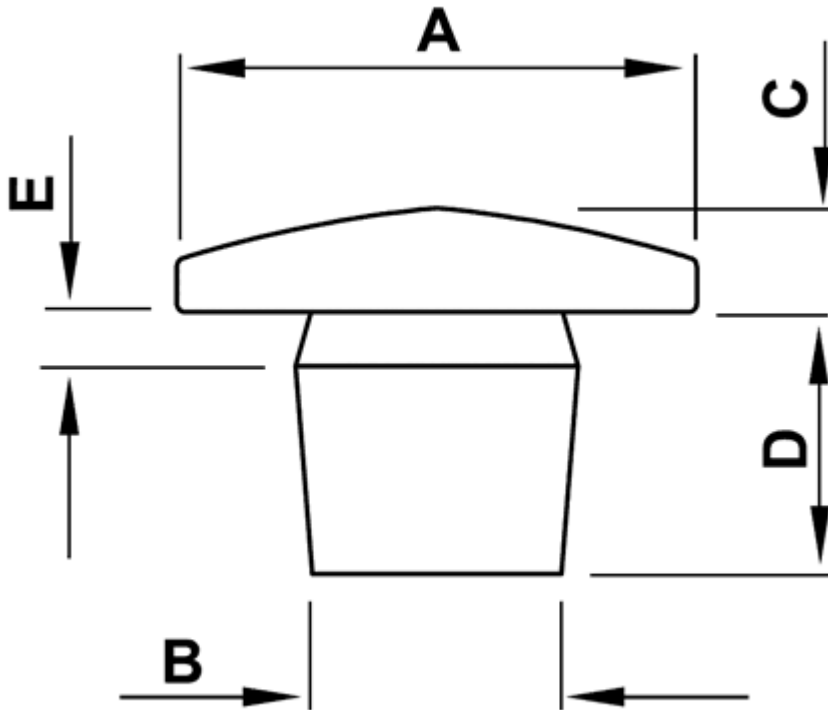


FP-5214 - Push-in feet



Details:

- **Material: TPE, working temperature: -28°C do +90°C**
- **Material: PVC, working temperature: -25°C do +60°C**
- **Color: black**
- Material available on special order: TPE, working temperature up to +130°C
- Standard pack: 2500 pcs

Symbol	Ext. diameter A	B	C	D	E	Material	Color
	[mm]	[mm]	[mm]	[mm]	[mm]		
5214PS01	12	6	2.8	6	1	TPE	black
4808PS01	13.5	6	2.8	6	1	TPE	black
0445CA01	12	6	2	6	1	PVC	black
0446CA01	12	6	4.5	6	1	PVC	black