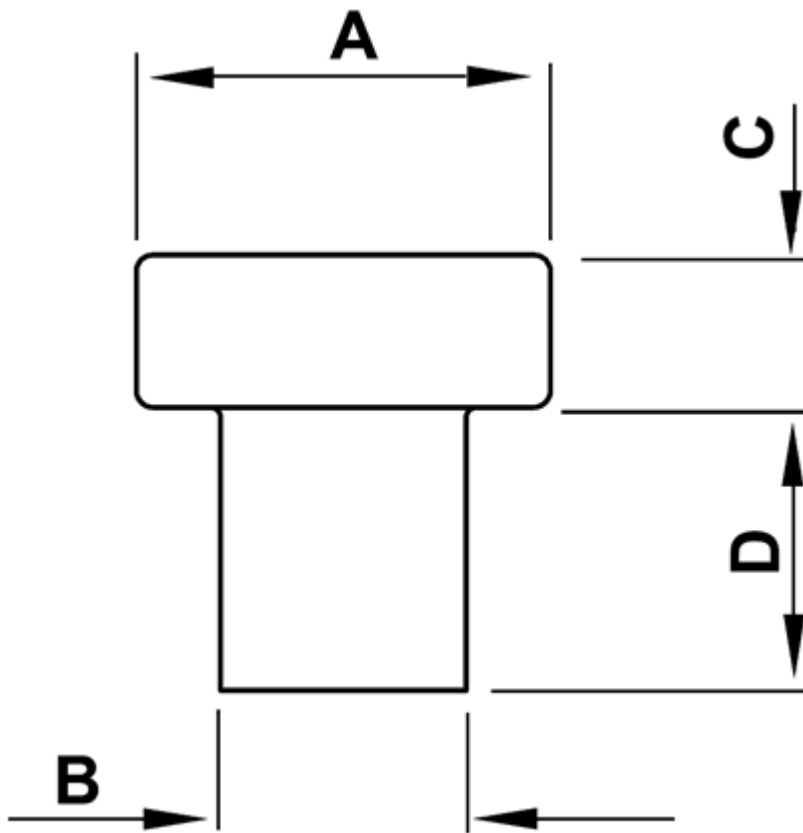


FP-0960 - Push-in feet



Details:

- **Material:** see table
- **Color:** black
- Working temperature (PVC): -25°C to +60°C
- Working temperature (LDPE): -30°C to +60°C

Symbol	A	B	C	D	Material	Color	Standard pack
	[mm]	[mm]	[mm]	[mm]			[szt./pcs]
0960CA01	Ø8.0	Ø5.0	3	3	Soft PVC	black	1000
1202CA01	Ø8.0	Ø5.0	3	5	Soft PVC	black	1000
1203CA01	Ø8.0	Ø5.0	3	7	Soft PVC	black	1000
1204CA01	Ø8.0	Ø5.0	3	9	Soft PVC	black	1000
0961CA01	Ø8.0	Ø6.0	2	4	Soft PVC	black	1000
2344CA01	Ø8.0	Ø6.0	2	6	Soft PVC	black	1000
0963CA01	Ø8.0	Ø6.0	2	8	Soft PVC	black	1000
2345CA01	Ø8.0	Ø6.0	2	10	Soft PVC	black	1000
0432CA01	15 x 10	Ø6.0	4.5	9	Soft PVC	black	2500
0432EA01	15 x 10	Ø6.0	4.5	9	LDPE	black	2500
0952CA01	Ø12.0	Ø8.0	2	5	Soft PVC	black	1000