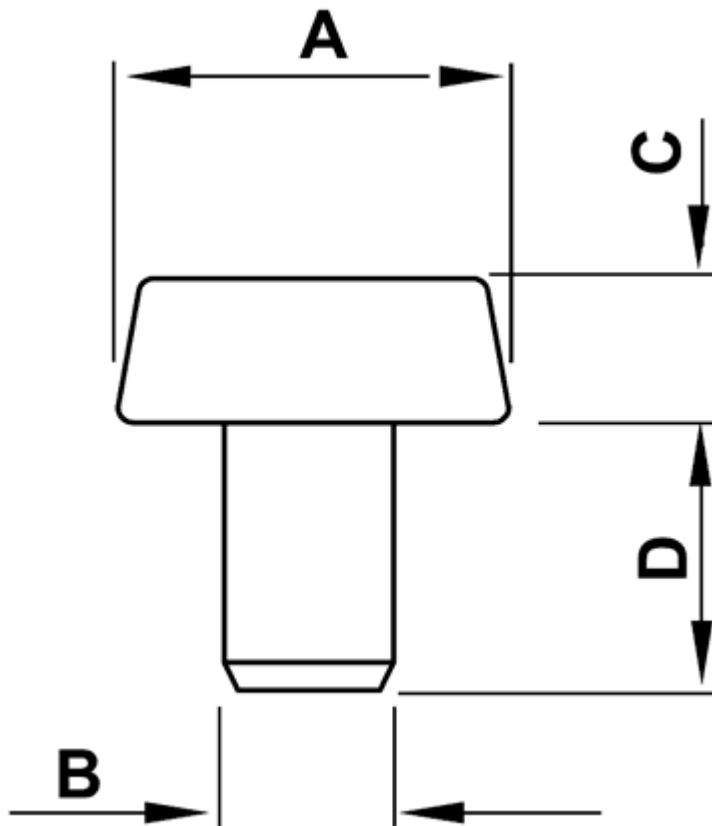


FP-0433 - Push-in feet



Details:

- **Material: Soft PVC or LDPE**
- **Color: black**
- Working temperature (PVC): -25°C to +60°C
- Working temperature (LDPE): -30°C to +60°C

| Symbol   | A       | ØB   | C    | D    | Material | Color | Standard pack |
|----------|---------|------|------|------|----------|-------|---------------|
|          | [mm]    | [mm] | [mm] | [mm] |          |       | [szt./pcs]    |
| 0433CA01 | 15 x 10 | 6    | 10   | 7    | Soft PVC | black | 2500          |
| 0433EA01 | 15 x 10 | 6    | 10   | 7    | LDPE     | black | 2500          |
| 3597CA01 | Ø5.0    | 3    | 4    | 4    | Soft PVC | black | 1000          |
| 0437CA01 | Ø7.0    | 3.5  | 1.5  | 5    | Soft PVC | black | 2500          |
| 0437EA01 | Ø7.0    | 3.5  | 1.5  | 5    | LDPE     | black | 2500          |
| 0435CA01 | Ø12.0   | 6    | 2.5  | 9    | Soft PVC | black | 2500          |
| 0435EA01 | Ø12.0   | 6    | 2.5  | 9    | LDPE     | black | 2500          |
| 0436CA01 | Ø12.0   | 6    | 3.8  | 9    | Soft PVC | black | 2500          |
| 0436EA01 | Ø12.0   | 6    | 3.8  | 9    | LDPE     | black | 2500          |
| 0434EA01 | Ø16.0   | 6    | 11   | 12   | LDPE     | black | 2500          |