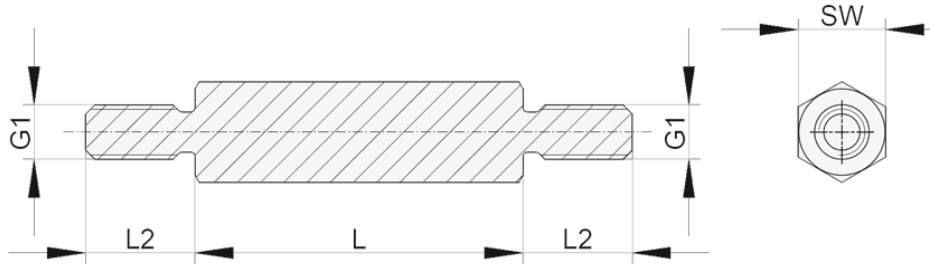


D-HM-3 - Zinc-plated steel hexagonal spacers



Details:

- Steel, zinc plated, Complies **DIN 176: 11 SMn Pb30**
- Minimum tensile strength **500 N/mm²**
- Surface finish according to **DIN 267: galvanised (A3 F)**
- **Length tolerance ±0.1mm (DIN 2768-m applies to SW13)**
- **Other lengths also available**
- **Standard pack: 100 pcs**

Symbol	Ext. thread G1	Wrench size SW	Length L	Ext. thread length L2	Material
		[mm]	[mm]	[mm]	
D-HM-3-M2-4-5	M2	4	5	5	steel, zinc-plated
D-HM-3-M2-4-8	M2	4	8	5	steel, zinc-plated
D-HM-3-M2-4-10	M2	4	10	5	steel, zinc-plated
D-HM-3-M2-4-12	M2	4	12	5	steel, zinc-plated
D-HM-3-M2-4-15	M2	4	15	5	steel, zinc-plated
D-HM-3-M2-4-18	M2	4	18	5	steel, zinc-plated
D-HM-3-M2-4-20	M2	4	20	5	steel, zinc-plated
D-HM-3-M2-4-25	M2	4	25	5	steel, zinc-plated
D-HM-3-M2-4-30	M2	4	30	5	steel, zinc-plated
D-HM-3-M2-4-35	M2	4	35	5	steel, zinc-plated
D-HM-3-M2-4-40	M2	4	40	5	steel, zinc-plated
D-HM-3-M2.5-4-5	M2.5	4	5	6	steel, zinc-plated
D-HM-3-M2.5-4-8	M2.5	4	8	6	steel, zinc-plated
D-HM-3-M2.5-4-10	M2.5	4	10	6	steel, zinc-plated
D-HM-3-M2.5-4-12	M2.5	4	12	6	steel, zinc-plated
D-HM-3-M2.5-4-15	M2.5	4	15	6	steel, zinc-plated
D-HM-3-M2.5-4-18	M2.5	4	18	6	steel, zinc-plated
D-HM-3-M2.5-4-20	M2.5	4	20	6	steel, zinc-plated
D-HM-3-M2.5-4-25	M2.5	4	25	6	steel, zinc-plated
D-HM-3-M2.5-4-30	M2.5	4	30	6	steel, zinc-plated
D-HM-3-M2.5-4-35	M2.5	4	35	6	steel, zinc-plated

Symbol	Ext. thread G1	Wrench size SW	Length L	Ext. thread length L2	Material
		[mm]	[mm]	[mm]	
D-HM-3-M2.5-4-40	M2.5	4	40	6	steel, zinc-plated
D-HM-3-M2.5-5-5	M2.5	5	5	6	steel, zinc-plated
D-HM-3-M2.5-5-8	M2.5	5	8	6	steel, zinc-plated
D-HM-3-M2.5-5-10	M2.5	5	10	6	steel, zinc-plated
D-HM-3-M2.5-5-12	M2.5	5	12	6	steel, zinc-plated
D-HM-3-M2.5-5-15	M2.5	5	15	6	steel, zinc-plated
D-HM-3-M2.5-5-18	M2.5	5	18	6	steel, zinc-plated
D-HM-3-M2.5-5-20	M2.5	5	20	6	steel, zinc-plated
D-HM-3-M2.5-5-25	M2.5	5	25	6	steel, zinc-plated
D-HM-3-M2.5-5-30	M2.5	5	30	6	steel, zinc-plated
D-HM-3-M2.5-5-35	M2.5	5	35	6	steel, zinc-plated
D-HM-3-M2.5-5-40	M2.5	5	40	6	steel, zinc-plated
D-HM-3-M2.5-5-45	M2.5	5	45	6	steel, zinc-plated
D-HM-3-M2.5-5-50	M2.5	5	50	6	steel, zinc-plated
D-HM-3-M3-5-5	M3	5	5	6	steel, zinc-plated
D-HM-3-M3-5-8	M3	5	8	6	steel, zinc-plated
D-HM-3-M3-5-10	M3	5	10	6	steel, zinc-plated
D-HM-3-M3-5-12	M3	5	12	6	steel, zinc-plated
D-HM-3-M3-5-15	M3	5	15	6	steel, zinc-plated
D-HM-3-M3-5-18	M3	5	18	6	steel, zinc-plated
D-HM-3-M3-5-20	M3	5	20	6	steel, zinc-plated
D-HM-3-M3-5-25	M3	5	25	6	steel, zinc-plated
D-HM-3-M3-5-30	M3	5	30	6	steel, zinc-plated
D-HM-3-M3-5-35	M3	5	35	6	steel, zinc-plated
D-HM-3-M3-5-40	M3	5	40	6	steel, zinc-plated
D-HM-3-M3-5-45	M3	5	45	6	steel, zinc-plated
D-HM-3-M3-5-50	M3	5	50	6	steel, zinc-plated
D-HM-3-M3-5.5-5	M3	5.5	5	6	steel, zinc-plated
D-HM-3-M3-5.5-8	M3	5.5	8	6	steel, zinc-plated
D-HM-3-M3-5.5-10	M3	5.5	10	6	steel, zinc-plated
D-HM-3-M3-5.5-12	M3	5.5	12	6	steel, zinc-plated
D-HM-3-M3-5.5-15	M3	5.5	15	6	steel, zinc-plated
D-HM-3-M3-5.5-18	M3	5.5	18	6	steel, zinc-plated
D-HM-3-M3-5.5-20	M3	5.5	20	6	steel, zinc-plated
D-HM-3-M3-5.5-25	M3	5.5	25	6	steel, zinc-plated
D-HM-3-M3-5.5-30	M3	5.5	30	6	steel, zinc-plated
D-HM-3-M3-5.5-35	M3	5.5	35	6	steel, zinc-plated
D-HM-3-M3-5.5-40	M3	5.5	40	6	steel, zinc-plated
D-HM-3-M3-5.5-45	M3	5.5	45	6	steel, zinc-plated
D-HM-3-M3-5.5-50	M3	5.5	50	6	steel, zinc-plated
D-HM-3-M3-5.5-55	M3	5.5	55	6	steel, zinc-plated
D-HM-3-M3-5.5-60	M3	5.5	60	6	steel, zinc-plated
D-HM-3-M3-5.5-65	M3	5.5	65	6	steel, zinc-plated
D-HM-3-M3-5.5-70	M3	5.5	70	6	steel, zinc-plated
D-HM-3-M3-6-5	M3	6	5	6	steel, zinc-plated
D-HM-3-M3-6-8	M3	6	8	6	steel, zinc-plated
D-HM-3-M3-6-10	M3	6	10	6	steel, zinc-plated
D-HM-3-M3-6-12	M3	6	12	6	steel, zinc-plated
D-HM-3-M3-6-15	M3	6	15	6	steel, zinc-plated
D-HM-3-M3-6-18	M3	6	18	6	steel, zinc-plated
D-HM-3-M3-6-20	M3	6	20	6	steel, zinc-plated
D-HM-3-M3-6-25	M3	6	25	6	steel, zinc-plated
D-HM-3-M3-6-30	M3	6	30	6	steel, zinc-plated
D-HM-3-M3-6-35	M3	6	35	6	steel, zinc-plated

Symbol	Ext. thread G1	Wrench size SW	Length L	Ext. thread length L2	Material
		[mm]	[mm]	[mm]	
D-HM-3-M3-6-40	M3	6	40	6	steel, zinc-plated
D-HM-3-M3-6-45	M3	6	45	6	steel, zinc-plated
D-HM-3-M3-6-50	M3	6	50	6	steel, zinc-plated
D-HM-3-M3-6-55	M3	6	55	6	steel, zinc-plated
D-HM-3-M3-6-60	M3	6	60	6	steel, zinc-plated
D-HM-3-M3-6-65	M3	6	65	6	steel, zinc-plated
D-HM-3-M3-6-70	M3	6	70	6	steel, zinc-plated
D-HM-3-M3-6-75	M3	6	75	6	steel, zinc-plated
D-HM-3-M3-6-80	M3	6	80	6	steel, zinc-plated
D-HM-3-M3-6-85	M3	6	85	6	steel, zinc-plated
D-HM-3-M3-6-90	M3	6	90	6	steel, zinc-plated
D-HM-3-M3-6-95	M3	6	95	6	steel, zinc-plated
D-HM-3-M3-6-100	M3	6	100	6	steel, zinc-plated
D-HM-3-M4-7-5	M4	7	5	8	steel, zinc-plated
D-HM-3-M4-7-8	M4	7	8	8	steel, zinc-plated
D-HM-3-M4-7-10	M4	7	10	8	steel, zinc-plated
D-HM-3-M4-7-12	M4	7	12	8	steel, zinc-plated
D-HM-3-M4-7-15	M4	7	15	8	steel, zinc-plated
D-HM-3-M4-7-18	M4	7	18	8	steel, zinc-plated
D-HM-3-M4-7-20	M4	7	20	8	steel, zinc-plated
D-HM-3-M4-7-25	M4	7	25	8	steel, zinc-plated
D-HM-3-M4-7-30	M4	7	30	8	steel, zinc-plated
D-HM-3-M4-7-35	M4	7	35	8	steel, zinc-plated
D-HM-3-M4-7-40	M4	7	40	8	steel, zinc-plated
D-HM-3-M4-7-45	M4	7	45	8	steel, zinc-plated
D-HM-3-M4-7-50	M4	7	50	8	steel, zinc-plated
D-HM-3-M4-7-55	M4	7	55	8	steel, zinc-plated
D-HM-3-M4-7-60	M4	7	60	8	steel, zinc-plated
D-HM-3-M4-7-65	M4	7	65	8	steel, zinc-plated
D-HM-3-M4-7-70	M4	7	70	8	steel, zinc-plated
D-HM-3-M4-7-75	M4	7	75	8	steel, zinc-plated
D-HM-3-M4-7-80	M4	7	80	8	steel, zinc-plated
D-HM-3-M4-7-85	M4	7	85	8	steel, zinc-plated
D-HM-3-M4-7-90	M4	7	90	8	steel, zinc-plated
D-HM-3-M4-7-95	M4	7	95	8	steel, zinc-plated
D-HM-3-M4-7-100	M4	7	100	8	steel, zinc-plated
D-HM-3-M4-8-5	M4	8	5	8	steel, zinc-plated
D-HM-3-M4-8-8	M4	8	8	8	steel, zinc-plated
D-HM-3-M4-8-10	M4	8	10	8	steel, zinc-plated
D-HM-3-M4-8-12	M4	8	12	8	steel, zinc-plated
D-HM-3-M4-8-15	M4	8	15	8	steel, zinc-plated
D-HM-3-M4-8-18	M4	8	18	8	steel, zinc-plated
D-HM-3-M4-8-20	M4	8	20	8	steel, zinc-plated
D-HM-3-M4-8-25	M4	8	25	8	steel, zinc-plated
D-HM-3-M4-8-30	M4	8	30	8	steel, zinc-plated
D-HM-3-M4-8-35	M4	8	35	8	steel, zinc-plated
D-HM-3-M4-8-40	M4	8	40	8	steel, zinc-plated
D-HM-3-M4-8-45	M4	8	45	8	steel, zinc-plated
D-HM-3-M4-8-50	M4	8	50	8	steel, zinc-plated
D-HM-3-M4-8-55	M4	8	55	8	steel, zinc-plated
D-HM-3-M4-8-60	M4	8	60	8	steel, zinc-plated
D-HM-3-M4-8-65	M4	8	65	8	steel, zinc-plated
D-HM-3-M4-8-70	M4	8	70	8	steel, zinc-plated
D-HM-3-M4-8-75	M4	8	75	8	steel, zinc-plated

Symbol	Ext. thread G1	Wrench size SW	Length L	Ext. thread length L2	Material
		[mm]	[mm]	[mm]	
D-HM-3-M4-8-80	M4	8	80	8	steel, zinc-plated
D-HM-3-M4-8-85	M4	8	85	8	steel, zinc-plated
D-HM-3-M4-8-90	M4	8	90	8	steel, zinc-plated
D-HM-3-M4-8-95	M4	8	95	8	steel, zinc-plated
D-HM-3-M4-8-100	M4	8	100	8	steel, zinc-plated
D-HM-3-M5-8-8	M5	8	8	8	steel, zinc-plated
D-HM-3-M5-8-10	M5	8	10	8	steel, zinc-plated
D-HM-3-M5-8-12	M5	8	12	8	steel, zinc-plated
D-HM-3-M5-8-15	M5	8	15	8	steel, zinc-plated
D-HM-3-M5-8-18	M5	8	18	8	steel, zinc-plated
D-HM-3-M5-8-20	M5	8	20	8	steel, zinc-plated
D-HM-3-M5-8-25	M5	8	25	8	steel, zinc-plated
D-HM-3-M5-8-30	M5	8	30	8	steel, zinc-plated
D-HM-3-M5-8-35	M5	8	35	8	steel, zinc-plated
D-HM-3-M5-8-40	M5	8	40	8	steel, zinc-plated
D-HM-3-M5-8-45	M5	8	45	8	steel, zinc-plated
D-HM-3-M5-8-50	M5	8	50	8	steel, zinc-plated
D-HM-3-M5-8-55	M5	8	55	8	steel, zinc-plated
D-HM-3-M5-8-60	M5	8	60	8	steel, zinc-plated
D-HM-3-M5-8-65	M5	8	65	8	steel, zinc-plated
D-HM-3-M5-8-70	M5	8	70	8	steel, zinc-plated
D-HM-3-M5-8-75	M5	8	75	8	steel, zinc-plated
D-HM-3-M5-8-80	M5	8	80	8	steel, zinc-plated
D-HM-3-M5-8-85	M5	8	85	8	steel, zinc-plated
D-HM-3-M5-8-90	M5	8	90	8	steel, zinc-plated
D-HM-3-M5-8-95	M5	8	95	8	steel, zinc-plated
D-HM-3-M5-8-100	M5	8	100	8	steel, zinc-plated
D-HM-3-M6-10-10	M6	10	10	10	steel, zinc-plated
D-HM-3-M6-10-12	M6	10	12	10	steel, zinc-plated
D-HM-3-M6-10-15	M6	10	15	10	steel, zinc-plated
D-HM-3-M6-10-18	M6	10	18	10	steel, zinc-plated
D-HM-3-M6-10-20	M6	10	20	10	steel, zinc-plated
D-HM-3-M6-10-25	M6	10	25	10	steel, zinc-plated
D-HM-3-M6-10-30	M6	10	30	10	steel, zinc-plated
D-HM-3-M6-10-35	M6	10	35	10	steel, zinc-plated
D-HM-3-M6-10-40	M6	10	40	10	steel, zinc-plated
D-HM-3-M6-10-45	M6	10	45	10	steel, zinc-plated
D-HM-3-M6-10-50	M6	10	50	10	steel, zinc-plated
D-HM-3-M6-10-55	M6	10	55	10	steel, zinc-plated
D-HM-3-M6-10-60	M6	10	60	10	steel, zinc-plated
D-HM-3-M6-10-65	M6	10	65	10	steel, zinc-plated
D-HM-3-M6-10-70	M6	10	70	10	steel, zinc-plated
D-HM-3-M6-10-75	M6	10	75	10	steel, zinc-plated
D-HM-3-M6-10-80	M6	10	80	10	steel, zinc-plated
D-HM-3-M6-10-85	M6	10	85	10	steel, zinc-plated
D-HM-3-M6-10-90	M6	10	90	10	steel, zinc-plated
D-HM-3-M6-10-95	M6	10	95	10	steel, zinc-plated
D-HM-3-M6-10-100	M6	10	100	10	steel, zinc-plated
D-HM-3-M8-13-15	M8	13	15	14	steel, zinc-plated
D-HM-3-M8-13-20	M8	13	20	14	steel, zinc-plated
D-HM-3-M8-13-25	M8	13	25	14	steel, zinc-plated
D-HM-3-M8-13-30	M8	13	30	14	steel, zinc-plated
D-HM-3-M8-13-35	M8	13	35	14	steel, zinc-plated
D-HM-3-M8-13-40	M8	13	40	14	steel, zinc-plated

Symbol	Ext. thread G1	Wrench size SW	Length L	Ext. thread length L2	Material
		[mm]	[mm]	[mm]	
D-HM-3-M8-13-45	M8	13	45	14	steel, zinc-plated
D-HM-3-M8-13-50	M8	13	50	14	steel, zinc-plated
D-HM-3-M8-13-55	M8	13	55	14	steel, zinc-plated
D-HM-3-M8-13-60	M8	13	60	14	steel, zinc-plated
D-HM-3-M8-13-65	M8	13	65	14	steel, zinc-plated
D-HM-3-M8-13-70	M8	13	70	14	steel, zinc-plated
D-HM-3-M8-13-75	M8	13	75	14	steel, zinc-plated
D-HM-3-M8-13-80	M8	13	80	14	steel, zinc-plated
D-HM-3-M8-13-85	M8	13	85	14	steel, zinc-plated
D-HM-3-M8-13-90	M8	13	90	14	steel, zinc-plated
D-HM-3-M8-13-95	M8	13	95	14	steel, zinc-plated
D-HM-3-M8-13-100	M8	13	100	14	steel, zinc-plated