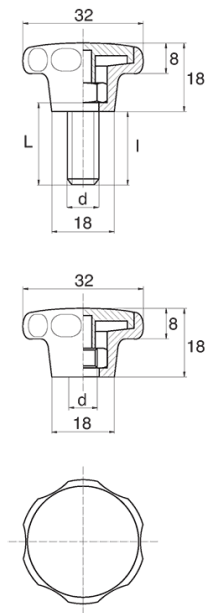


BL-POK320 - Star grips



Details:

- **Handle material: Nylon**
- **Handle colour: black**; other colours available on special order
- Thread material: see table; For type M stainless steel, brass and aluminium available on special order
- Type:
 - F - female
 - M - male
- Standard pack: 100 pcs

Symbol	Type	Ext. thread d	Int. thread d	Thread material	L	l ±1mm	Material	Color
					[mm]	[mm]		
BL-POK320M-M4-10	M	M4	-	zinc-plated steel	10	7.5	PA	black
BL-POK320M-M4-12	M	M4	-	zinc-plated steel	12	9.5	PA	black
BL-POK320M-M4-16	M	M4	-	zinc-plated steel	16	13.5	PA	black
BL-POK320M-M4-20	M	M4	-	zinc-plated steel	20	17.5	PA	black
BL-POK320M-M4-25	M	M4	-	zinc-plated steel	25	22.5	PA	black
BL-POK320M-M4-30	M	M4	-	zinc-plated steel	30	27.5	PA	black
BL-POK320M-M4-35	M	M4	-	zinc-plated steel	35	32.5	PA	black
BL-POK320M-M4-40	M	M4	-	zinc-plated steel	40	37.5	PA	black
BL-POK320M-M4-50	M	M4	-	zinc-plated steel	50	47.5	PA	black
BL-POK320M-M5-10	M	M5	-	zinc-plated steel	10	8	PA	black
BL-POK320M-M5-12	M	M5	-	zinc-plated steel	12	10	PA	black
BL-POK320M-M5-16	M	M5	-	zinc-plated steel	16	14	PA	black
BL-POK320M-M5-20	M	M5	-	zinc-plated steel	20	18	PA	black
BL-POK320M-M5-25	M	M5	-	zinc-plated steel	25	23	PA	black
BL-POK320M-M5-30	M	M5	-	zinc-plated steel	30	28	PA	black
BL-POK320M-M5-35	M	M5	-	zinc-plated steel	35	33	PA	black
BL-POK320M-M5-40	M	M5	-	zinc-plated steel	40	38	PA	black
BL-POK320M-M5-45	M	M5	-	zinc-plated steel	45	43	PA	black
BL-POK320M-M5-50	M	M5	-	zinc-plated steel	50	48	PA	black
BL-POK320M-M5-60	M	M5	-	zinc-plated steel	60	58	PA	black
BL-POK320M-M5-08	M	M5	-	zinc-plated steel	8	6	PA	black

Symbol	Type	Ext. thread d	Int. thread d	Thread material	L	l ±1mm	Material	Color
					[mm]	[mm]		
BL-POK320M-M6-10	M	M6	-	zinc-plated steel	10	7	PA	black
BL-POK320M-M6-12	M	M6	-	zinc-plated steel	12	9	PA	black
BL-POK320M-M6-16	M	M6	-	zinc-plated steel	16	13	PA	black
BL-POK320M-M6-20	M	M6	-	zinc-plated steel	20	17	PA	black
BL-POK320M-M6-25	M	M6	-	zinc-plated steel	25	22	PA	black
BL-POK320M-M6-30	M	M6	-	zinc-plated steel	30	27	PA	black
BL-POK320M-M6-35	M	M6	-	zinc-plated steel	35	32	PA	black
BL-POK320M-M6-40	M	M6	-	zinc-plated steel	40	37	PA	black
BL-POK320M-M6-45	M	M6	-	zinc-plated steel	45	42	PA	black
BL-POK320M-M6-50	M	M6	-	zinc-plated steel	50	47	PA	black
BL-POK320M-M6-60	M	M6	-	zinc-plated steel	60	57	PA	black
BL-POK320M-M6-70	M	M6	-	zinc-plated steel	70	67	PA	black
BL-POK320M-M8-10	M	M8	-	zinc-plated steel	10	8	PA	black
BL-POK320M-M8-12	M	M8	-	zinc-plated steel	12	10	PA	black
BL-POK320M-M8-16	M	M8	-	zinc-plated steel	16	14	PA	black
BL-POK320M-M8-20	M	M8	-	zinc-plated steel	20	18	PA	black
BL-POK320M-M8-25	M	M8	-	zinc-plated steel	25	23	PA	black
BL-POK320M-M8-30	M	M8	-	zinc-plated steel	30	28	PA	black
BL-POK320M-M8-35	M	M8	-	zinc-plated steel	35	33	PA	black
BL-POK320M-M8-40	M	M8	-	zinc-plated steel	40	38	PA	black
BL-POK320M-M8-45	M	M8	-	zinc-plated steel	45	43	PA	black
BL-POK320M-M8-50	M	M8	-	zinc-plated steel	50	48	PA	black
BL-POK320M-M8-60	M	M8	-	zinc-plated steel	60	58	PA	black
BL-POK320F-M5-1	F	-	M5	zinc-plated steel	-	-	PA	black
BL-POK320F-M5-2	F	-	M5	stainless steel	-	-	PA	black
BL-POK320F-M5-3	F	-	M5	brass	-	-	PA	black
BL-POK320F-M5-4	F	-	M5	PA	-	-	PA	black
BL-POK320F-M6-1	F	-	M6	zinc-plated steel	-	-	PA	black
BL-POK320F-M6-2	F	-	M6	stainless steel	-	-	PA	black
BL-POK320F-M6-3	F	-	M6	brass	-	-	PA	black
BL-POK320F-M6-4	F	-	M6	PA	-	-	PA	black
BL-POK320F-M8-1	F	-	M8	zinc-plated steel	-	-	PA	black
BL-POK320F-M8-2	F	-	M8	stainless steel	-	-	PA	black
BL-POK320F-M8-3	F	-	M8	brass	-	-	PA	black
BL-POK320F-M8-4	F	-	M8	PA	-	-	PA	black