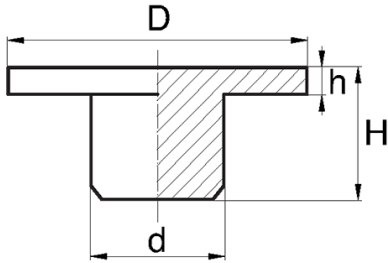
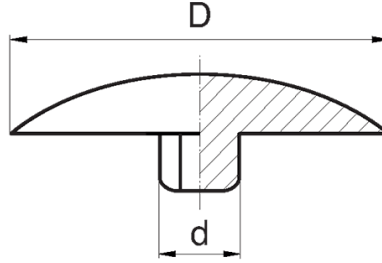


BL-OSI2 - Allen screw caps DIN 912



Typ 1 / Type 1



Typ 2 / Type 2



Details:

- **Material: PE**
- **Colour: black, white**
- Colours available on special order: beige, brown, grey, green, blue
- Depending on the mould, the surface of the part can be smooth or dull

Symbol	Thread	Wrench size	d	Head diameter D	Head height h	H	Type	Material	Color
		[mm]	[mm]	[mm]	[mm]	[mm]			
BL-OSI2-M4-120-BK	M4	3	3.1	12	1.9	4.4	2	PE	black
BL-OSI2-M4-90-BK	M4	3	3.2	9	1.2	3.5	2	PE	black
BL-OSI2-M5-120-WH	M5	3	3.1	12	1.9	4.4	2	PE	white
BL-OSI2-M5-90-WH	M5	3	3.2	9	1.2	3.5	2	PE	white
BL-OSI2-M5-125-BK	M5	4	4.1	12.5	2.1	4.9	2	PE	black
BL-OSI2-M5-100-BK	M5	4	4.2	10	1.1	4.1	1	PE	black
BL-OSI2-M5-130-BK	M5	4	4.2	13	1.5	4.5	2	PE	black
BL-OSI2-M5-145-BK	M5	4	4.2	14.5	2.1	5	2	PE	black
BL-OSI2-M5-180-BK	M5	4	4.2	18	1.1	3.8	1	PE	black
BL-OSI2-M6-125-WH	M6	4	4.1	12.5	2.1	4.9	2	PE	white
BL-OSI2-M6-100-WH	M6	4	4.2	10	1.1	4.1	1	PE	white
BL-OSI2-M6-130-WH	M6	4	4.2	13	1.5	4.5	2	PE	white
BL-OSI2-M6-145-WH	M6	4	4.2	14.5	2.1	5	2	PE	white
BL-OSI2-M6-180-WH	M6	4	4.2	18	1.1	3.8	1	PE	white
BL-OSI2-M6-100-BK	M6	5	5.3	10	1.2	4.2	2	PE	black
BL-OSI2-M6-115-BK	M6	5	5.3	11.5	2.2	4.8	2	PE	black
BL-OSI2-M6-180-BK	M6	5	5.3	18	0.9	4.8	1	PE	black
BL-OSI2-M8-100-WH	M8	5	5.3	10	1.2	4.2	2	PE	white
BL-OSI2-M8-115-WH	M8	5	5.3	11.5	2.2	4.8	2	PE	white
BL-OSI2-M8-180-WH	M8	5	5.3	18	0.9	4.8	1	PE	white
BL-OSI2-M8-130-BK	M8	6	6	13	1.7	7.3	2	PE	black
BL-OSI2-M9-130-WH	M9	6	6	13	1.7	7.3	2	PE	white
BL-OSI2-M10-150-BK	M10	8	8.5	15	2.1	8.8	2	PE	black

Symbol	Thread	Wrench size	d	Head diameter D	Head height h	H	Type	Material	Color
		[mm]	[mm]	[mm]	[mm]	[mm]			
BL-OSI2-M11-150-WH	M11	8	8.5	15	2.1	8.8	2	PE	white
BL-OSI2-M12-130-BK	M12	10	10	13	2.1	5.2	2	PE	black
BL-OSI2-M13-130-WH	M13	10	10	13	2.1	5.2	2	PE	white
BL-OSI2-M14-175-BK	M14	12	13.2	17.5	2.3	10.6	2	PE	black
BL-OSI2-M14-175-WH	M14	12	13.2	17.5	2.3	10.6	2	PE	white
BL-OSI2-M16-190-BK	M16	14	15.5	19	2.5	6.7	2	PE	black
BL-OSI2-M16-190-WH	M16	14	15.5	19	2.5	6.7	2	PE	white