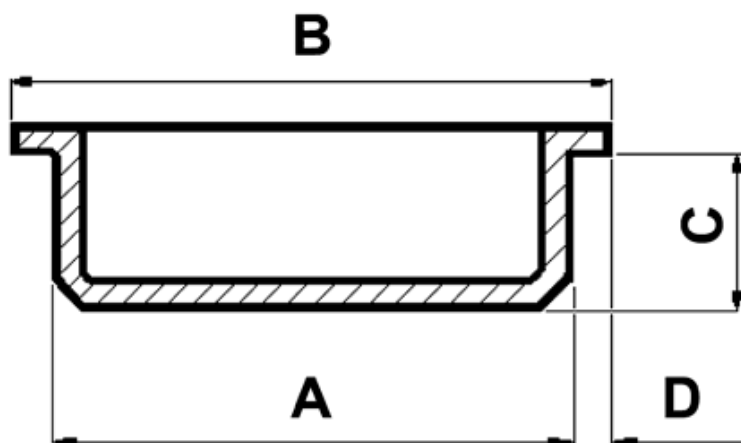


FP-3790 - Zaślepki rur



Dane techniczne:

- **Materiał:** LDPE
- **Kolor:** naturalny
- **Temperatura pracy:** -30°C do +60°C

| Symbol | ØA | ØB | C | D | Opakowanie |
|----------|------|------|------|-----|------------|
| | [mm] | | | | [szt.] |
| 3848EA00 | 53.0 | 59.0 | 11.0 | 3.0 | 1500 |