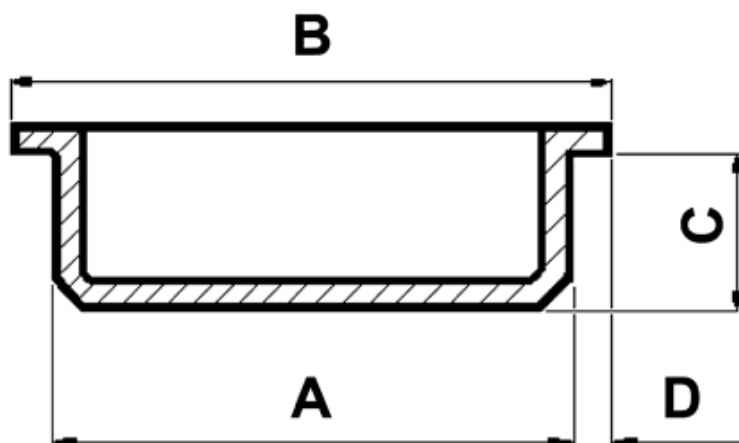


FP-3790 - Zaślepki rur



Dane techniczne:

- **Materiał:** LDPE
- **Kolor:** naturalny
- **Temperatura pracy:** -30°C do +60°C

Symbol	ØA	ØB	C	D	Opakowanie
	[mm]				[szt.]
1000EA00	6.5	10.0	7.0	1.8	50000