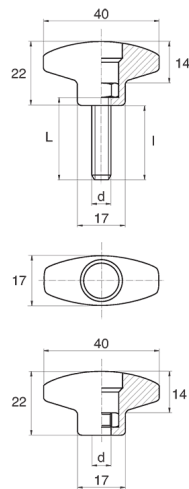


## BL-POK260 - T-handles



**Details:**

- **Handle material:** Nylon
- **Handle colour:** black; other colours available on special order
- **Thread material:** see table; For type M stainless steel, brass and aluminium available on special order
- **Type:**
  - F - female
  - M - male

Part No.	Type	Thread d	Thread material	L	I ±1mm	Standard pack
				[mm]		[pcs]
BL-POK260M-M5-20	M	M5	zinc-plated steel	20	17	100