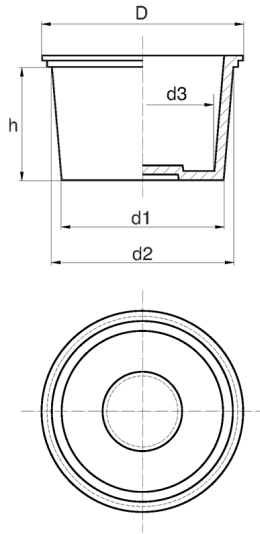


## BL-ZST - Tapered plugs



**Details:**

- **Material: LDPE**
- **Colour: yellow**
- Materials available on special order: PP, PA, PVDF
- Colours available on special order: blue, red, grey, green, black
- Depending on the mould, the surface of the part can be smooth or dull
- $d3 = d1$  minus 2 to 3 mm depending on the model

Part No.	d1	d2	D	h	Dla gwintu	Standard pack
	[mm]					[pcs]
BL-ZST-207	20.7	23.5	28.0	16.0	M25 x 1.5	1000