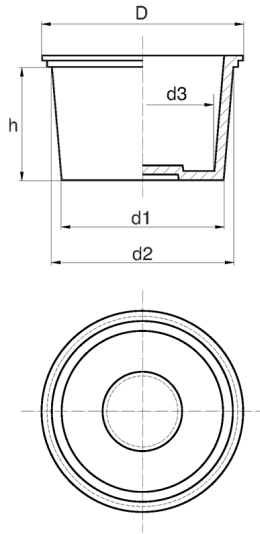


## BL-ZST - Tapered plugs



**Details:**

- **Material: LDPE**
- **Colour: yellow**
- Materials available on special order: PP, PA, PVDF
- Colours available on special order: blue, red, grey, green, black
- Depending on the mould, the surface of the part can be smooth or dull
- $d3 = d1$  minus 2 to 3 mm depending on the model

Part No.	d1	d2	D	h	Dla gwintu		Standard pack
	[mm]						[pcs]
BL-ZST-084	8.4	10.1	14.0	10.0	M11 x 1.0	R 1/8"	1000