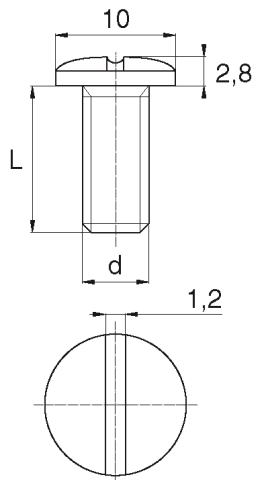


**BL-SLP10 - Flat head slotted screws D10**



**Details:**

- **Material: Nylon**
- **Colour: natural**
- Materials: Nylon glass filled, PP, PE, PVDF, PC available on special order
- Other colours available on special order
- Washer faced head screw on special order
- Lengths 15 and 17 mm have a 5.0 mm non-threaded part under the head
- The dimension M4x30 has a 5.0 mm non-threaded part under the head
- Most screws fully threaded up to 80 mm long
- Head diameter: 10.0 mm

Part No.	Size	Standard pack
		[pcs]
BL-SLP10-M8x35	M8 x 35	5000