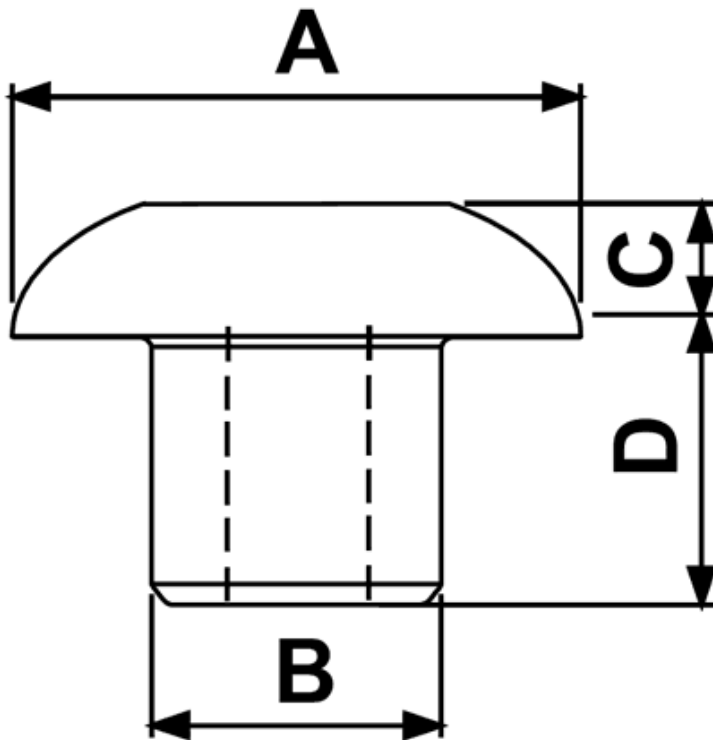


FP-0426 - Push-in feet



Details:

- **Material: Soft PVC or LDPE**
- **Color: black**
- Working temperature (PVC): -25°C to +60°C
- Working temperature (LDPE): -30°C to +60°C

Part No.	A	B	C	D	Material	Standard pack
	[mm]					[pcs]
0429CA01	Ø18.0	Ø8.0	5.0	15.0	Soft PVC	2500